



Glebe, NSW

1112/1 Scotsman Street

1
BED

1
BATH



1-Bedroom Apartment in Harold Park

Welcome to Harold Park, Glebe's Secret Backyard.

Here in Harold Park you will find yourself in an idyllic parkside location, with only a short walk to Glebe Foreshore. Just meters away, The Tramsheds retail precinct resides featuring cafes, a grocery store, restaurants and a medical centre.

This 1-bedroom Apartment has to offer:

- Large bedroom with floor to ceiling built-ins
- Bright and sunny balcony
- Stone benchtop and Miele appliances in kitchen
- Modern bathrooms with vanity storage

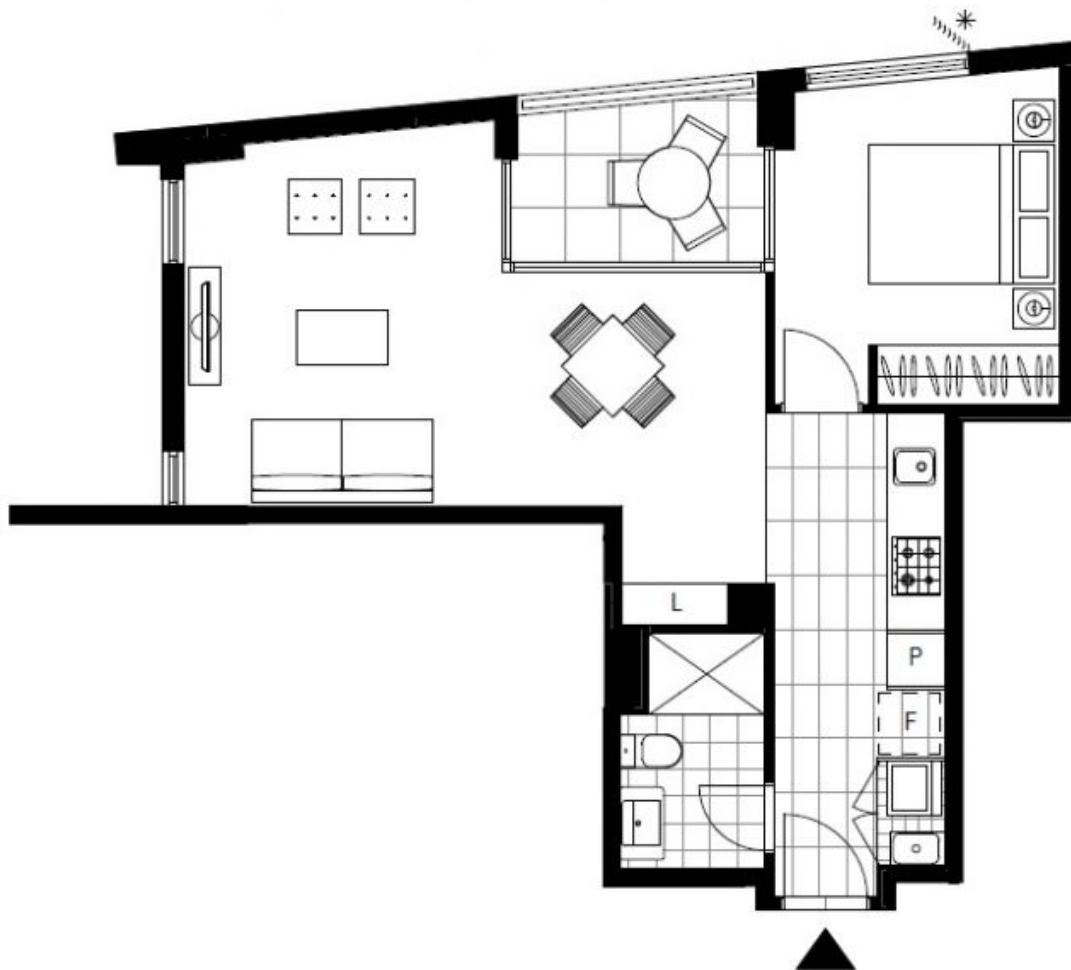
\$585 per week

Contact: Naz Sabzpour
02 8588 8888
0401 545 440

Type: Apartment
Date Available: 23/07/2022

Bond: \$2340

<https://www.resbymirvac.com>



LEVEL 1

Plans shown are only indicative of layout. Dimensions are approximate.

Glebe, NSW
1112/1 Scotsman Street