

**Bondi, NSW**  
6409/32 Wellington Street

**2** BED **2** BATH **1** CAR 

**Modern East Facing 2-Bedroom Apartment with Parking in 'The Moreton', Bondi**

Welcome to The Moreton at Bondi

Situated just off Bondi Road, you will find yourself on the doorstep of local shops and cafes and within minutes of Sydney's famous Bondi Beach. Set amongst luscious landscaped grounds, residents will enjoy outdoor BBQ facilities and seating areas amongst the Moreton Bay fig trees.

This 4th floor, Mirvac apartment features:

- Well appointed bedrooms with built-in wardrobes
- Tiled open-plan living and dining area with plenty of natural light
- Designer kitchen with stone benchtops and built-in Miele appliances

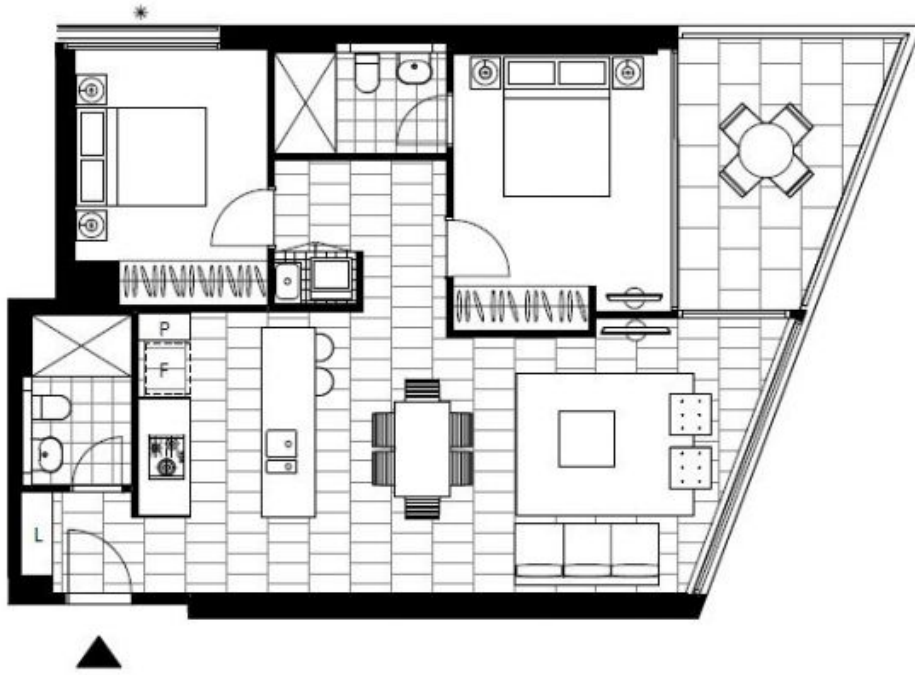
**DEPOSIT TAKEN**

**Contact:** Carmen Whiteley  
02 8588 8888  
0497 555 519

**Type:** Apartment

**Date Available:** 01/08/2022

**<https://www.resbymirvac.com>**



Plans shown are only indicative of layout. Dimensions are approximate.

**Bondi, NSW**  
6409/32 Wellington Street