

Bondi, NSW

6409/32 Wellington Street

2 BED **2** BATH **1** CAR 

Modern East Facing 2-Bedroom Apartment with Parking in 'The Moreton', Bondi

Welcome to The Moreton at Bondi

Situated just off Bondi Road, you will find yourself on the doorstep of local shops and cafes and within minutes of Sydney's famous Bondi Beach. Set amongst luscious landscaped grounds, residents will enjoy outdoor BBQ facilities and seating areas amongst the Moreton Bay fig trees.

This 4th floor, Mirvac apartment features:

- Well appointed bedrooms with built-in wardrobes
- Tiled open-plan living and dining area with plenty of natural light
- Designer kitchen with stone benchtops and built-in Miele appliances

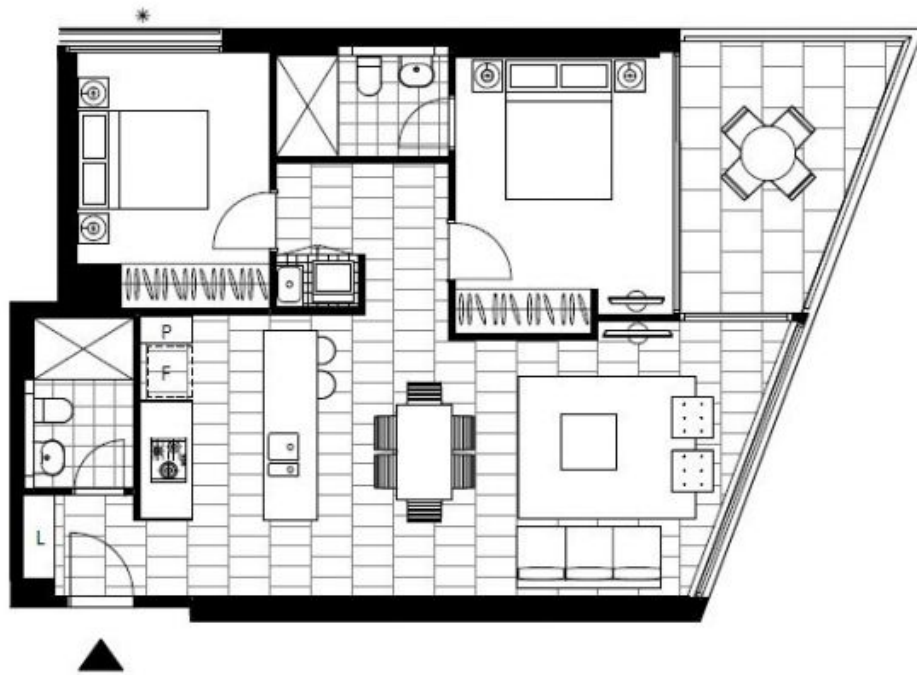
DEPOSIT TAKEN

Contact: Carmen Whiteley
02 8588 8888
0497 555 519

Type: Apartment

Date Available: 01/08/2022

<https://www.resbymirvac.com>



Plans shown are only indicative of layout. Dimensions are approximate.

Bondi, NSW
6409/32 Wellington Street