



Glebe, NSW

11 Grattan Close

3 BED **2** BATH **2** CAR **RES**

Oversized 3 Bedroom Terrace in Harold Park, Glebe

Welcome to Harold Park, Glebe's Secret Backyard.

Here in Harold Park you will find yourself in an idyllic parkside location, with only a short walk to Glebe Foreshore. Just meters away, The Tramsheds retail precinct resides featuring cafes, a grocery store, restaurants and a medical centre.

This 231sqm, Mirvac Terrace Home features:

- Large bedrooms with built-in wardrobes, walk-in off master
- Stone benchtops and Miele appliances in kitchen, Fridge included
- Modern bathrooms with vanity storage, bathtub in ensuite
- Spacious open plan living and dining area with timber flooring

\$1500 per week | Deposit Taken

Contact: Naz Sabzpouri
02 8588 8888
0401 545 440

Type: Terrace

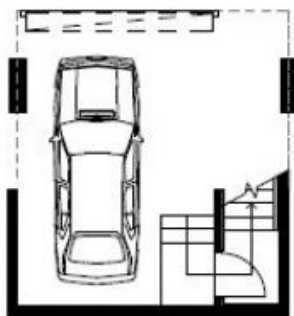
Date Available: 06/07/2022

Bond: \$6000

<https://www.resbymirvac.com>

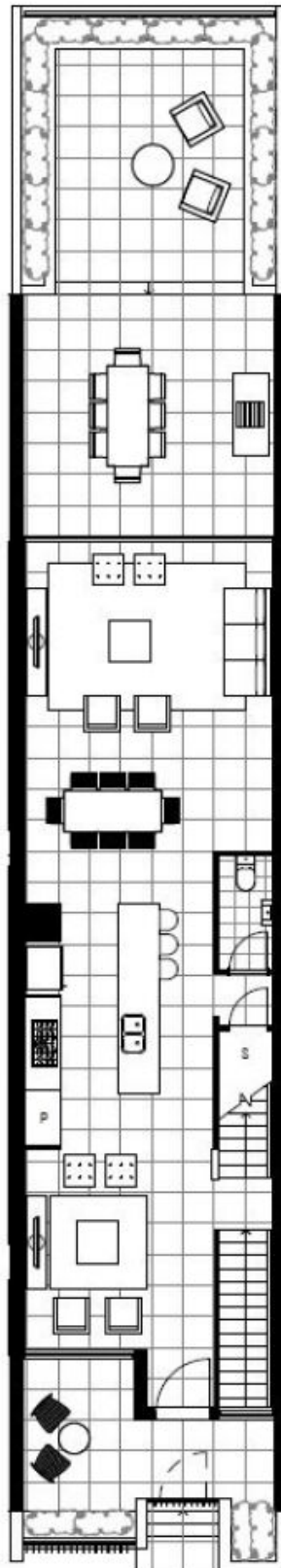


Allocated car space

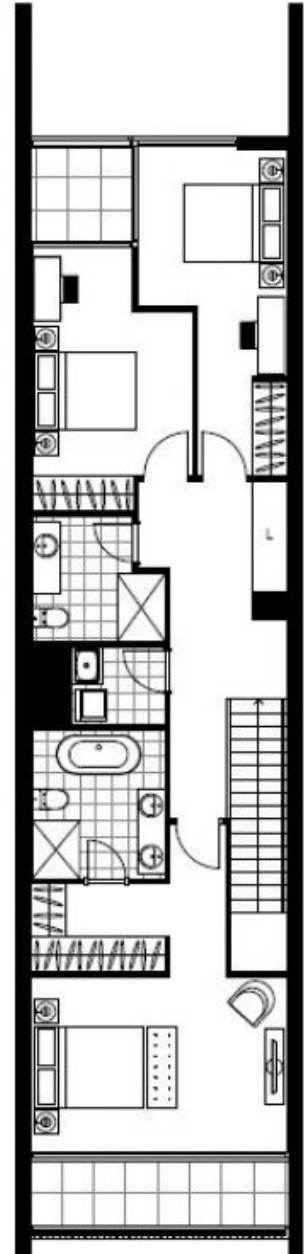


Lock up garage

BASEMENT



GROUND FLOOR



FIRST FLOOR

Plans shown are only indicative of layout. Dimensions are approximate.

Glebe, NSW
11 Grattan Close