



Glebe, NSW

401/2 Scotsman Street

2 **2** **1** **RES**
BED BATH CAR

Furnished, Over Sized and Superbly Appointed 2 Bedroom Apartment in Harold Park \$950 per week | Deposit Taken!

This 2-Bedroom Apartment features:

- Large bedrooms with generous built-in wardrobes
- Spacious living and dining area, leading to the balcony
- Contemporary kitchen with stone benchtops and Miele appliances
- Sleek bathrooms with plenty of storage
- Sunny balcony, perfect for entertaining
- Internal laundry with washer and dryer included
- Secure car space included
- Ducted A/C, video intercom and NBN connectivity
- 360m to the Heritage-listed Tramsheds, light rail station and public transport

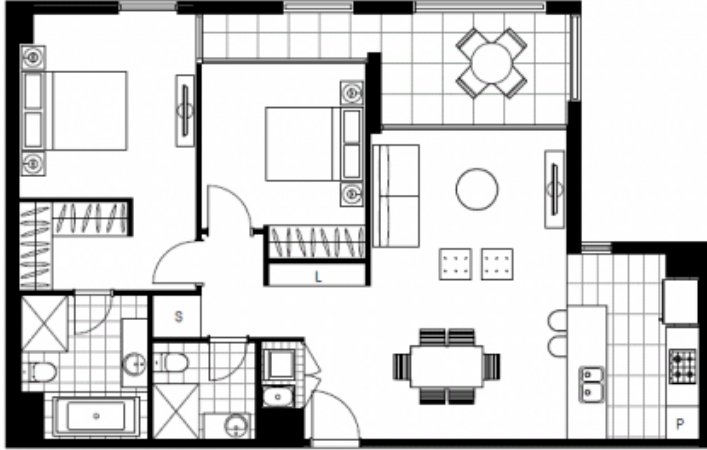
Contact: Naz Sabzpour
02 8588 8888
0401 545 440

Type: Apartment

Date Available: 05/07/2016

Bond: \$3800

<https://www.resbymirvac.com>



LEVEL 2,4

Plans shown are only indicative of layout. Dimensions are approximate.

Glebe, NSW
401/2 Scotsman Street