



Glebe, NSW

401/2 Scotsman Street

2
BED

2
BATH

1
CAR



Furnished, Over Sized and Superbly Appointed 2 Bedroom Apartment in Harold Park

This 2-Bedroom Apartment features:

- Large bedrooms with generous built-in wardrobes
- Spacious living and dining area, leading to the balcony
- Contemporary kitchen with stone benchtops and Miele appliances
- Sleek bathrooms with plenty of storage
- Sunny balcony, perfect for entertaining
- Internal laundry with washer and dryer included
- Secure car space included
- Ducted A/C, video intercom and NBN connectivity
- 360m to the Heritage-listed Tramsheds, light rail station and public transport

Contact:

Naz Sabzpouri
02 8588 8888
0401 545 440

Type:

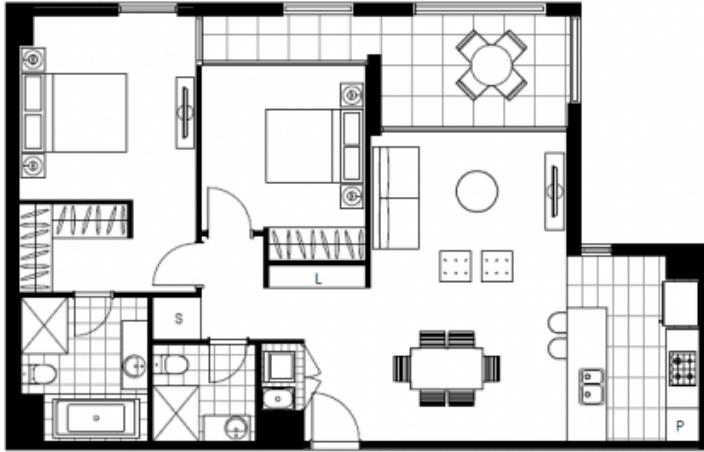
Apartment

Date Available: 05/07/2016

Bond:

\$3800

<https://www.resbymirvac.com>



LEVEL 2,4

Plans shown are only indicative of layout. Dimensions are approximate.

Glebe, NSW
401/2 Scotsman Street