

Glebe, NSW

5301/148 Ross Street

1
BED

1
BATH



Garden Facing 1-Bedroom Apartment in Harold Park

Welcome to Harold Park, Glebe's Secret Backyard.

Here in Harold Park you will find yourself in an idyllic parkside location, with only a short walk to Glebe Foreshore. Just meters away, The Tramsheds retail precinct resides featuring cafes, a grocery store, restaurants and a medical centre.

This 3rd floor Apartment offers:

- Large bedroom with floor to ceiling built-in wardrobe
- Balcony with views over the internal gardens
- Stone benchtops and Miele appliances in kitchen
- Contemporary bathroom with vanity storage

\$580 per week

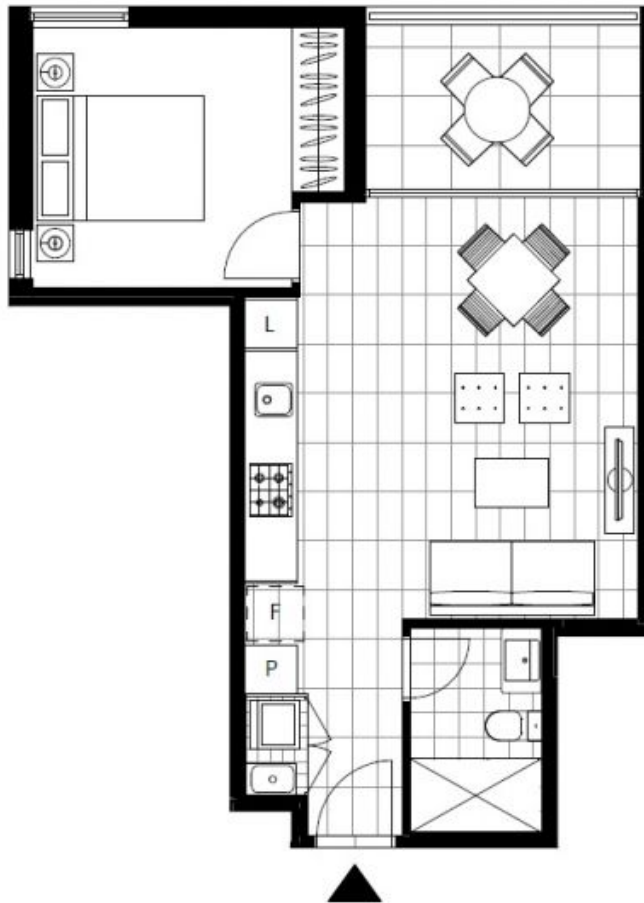
Contact: Naz Sabzpouri
02 8588 8888
0401 545 440

Type: Apartment

Date Available: 23/07/2022

Bond: \$2320

<https://www.resbymirvac.com>



LEVEL 3

Plans shown are only indicative of layout. Dimensions are approximate.

Glebe, NSW
5301/148 Ross Street