



Glebe, NSW
812/159 Ross Street

2 **2** **1** **RES**
BED BATH CAR

Highly Sought After 2-Bedroom Apartment in Harold Park

Welcome to Harold Park, Glebe's Secret Backyard.

Here in Harold Park you will find yourself in an idyllic parkside location, with only a short walk to Glebe Foreshore. Just meters away, The Tramsheds retail precinct resides featuring cafes, a grocery store, restaurants and a medical centre.

This 104sqm, 8th floor Apartment features:

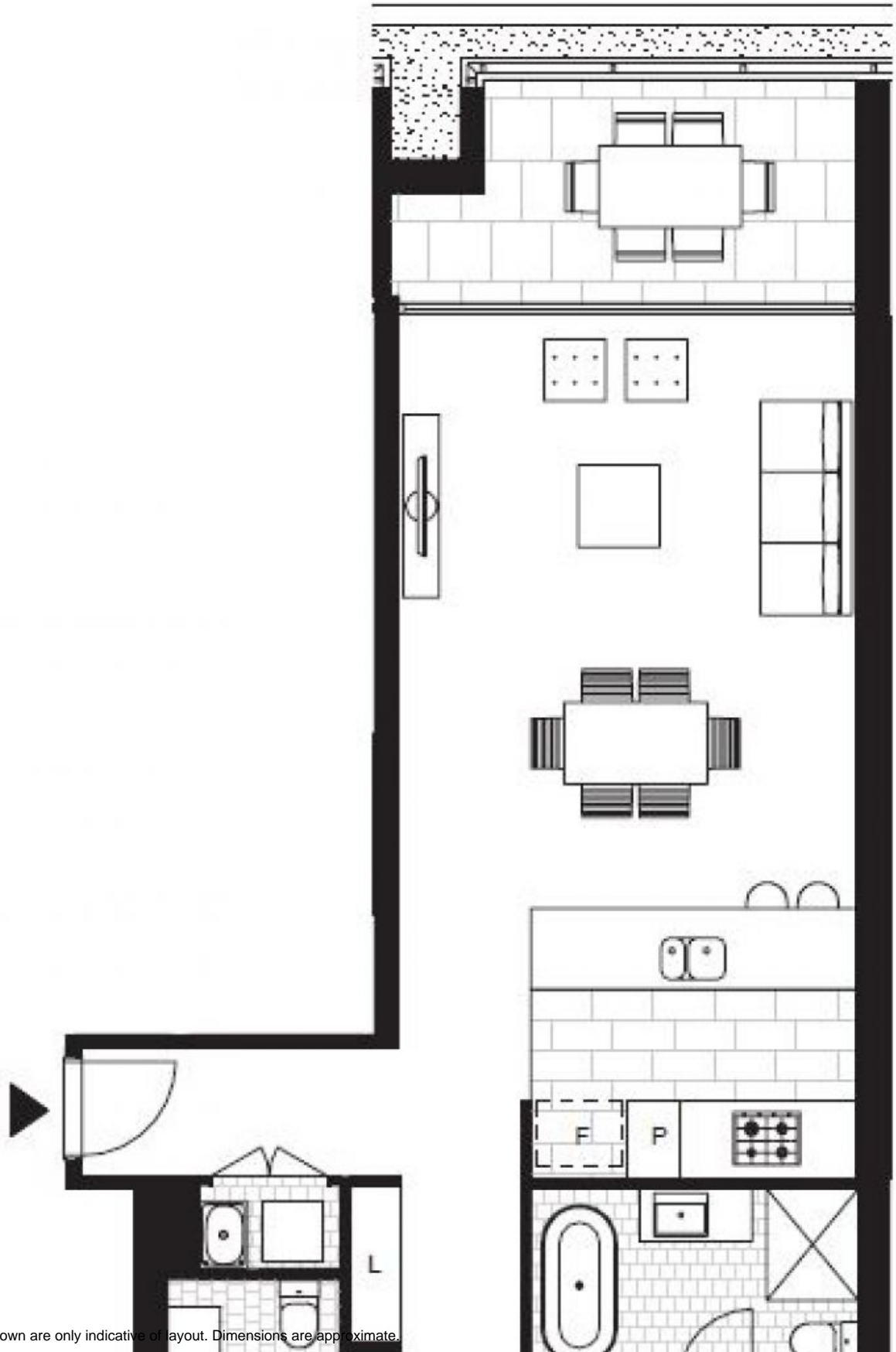
- Large bedrooms with generous built-in wardrobes
- Open-plan living and dining area, leading to the balcony
- Contemporary kitchen with stone benchtops and Miele appliances

\$970 per week | Park Facing

Contact: Naz Sabzpouri
02 8588 8888
0401 545 440

Type: Apartment
Date Available: 21/07/2022

Bond: \$3880
<https://www.resbymirvac.com>



Plans shown are only indicative of layout. Dimensions are approximate.

Glebe, NSW
812/159 Ross Street