



## DOCKLANDS, VIC

1404/100 Lorimer Street

1

BED

1

BATH

1

CAR



### Light filled fully furnished apartment

Welcome to 'Array' Tower, one of the most coveted buildings in the Yarra's Edge precinct. Perfectly positioned with an elite waterfront address, Array offers easy access to the fantastic shopping at South Wharf DFO as well as local cafes and restaurants along the Yarra's Edge promenade.

Expansive open plan living and dining experience with adjoining balcony  
Study nook  
Spacious bedroom with BIR  
Stylish bathroom  
Secure parking X1  
Video intercom entrance

### UNDER OFFER | MORE AVAILABLE

**Contact:** Aleiasha Clark  
03 9645 1199  
0491 174 507

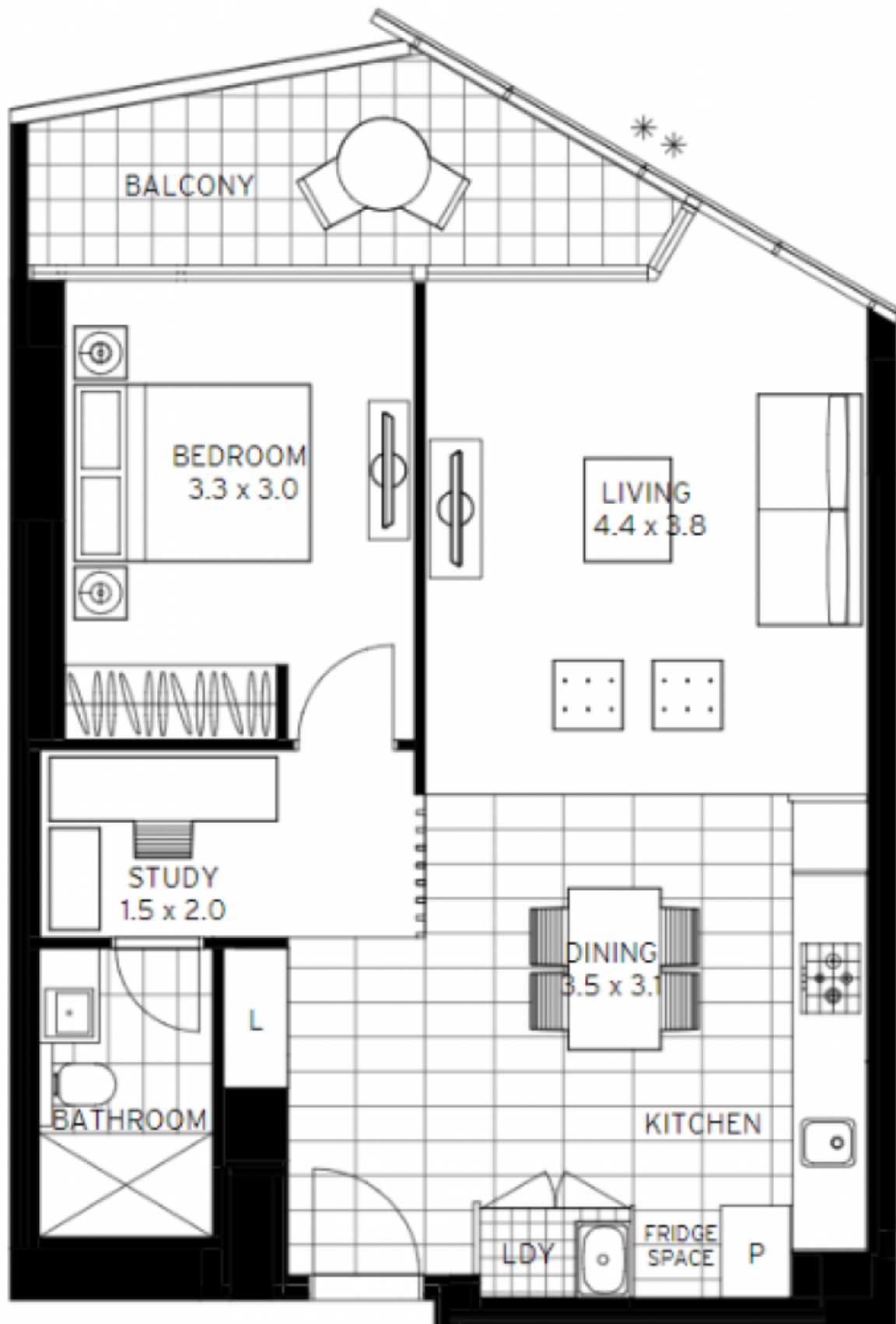
**Type:** Apartment

**Date Available:** 11/07/2022

**Leased Date:** 11/07/2022

**Bond:** \$2933

<https://www.resbymirvac.com>



Plans shown are only indicative of layout. Dimensions are approximate.

**DOCKLANDS, VIC**  
1404/100 Lorimer Street