



Glebe, NSW
317/1A The Crescent

2 BED **2** BATH **1** CAR 

Spacious and Sunny 2-Bedroom Apartment in Harold Park

Welcome to Harold Park, Glebe's Secret Backyard.

Here in Harold Park you will find yourself in an idyllic parkside location, with only a short walk to Glebe Foreshore. Just meters away, The Tramsheds retail precinct resides featuring cafes, a grocery store, restaurants and a medical centre.

This 104sqm Apartment has to offer:

- Generous bedrooms with built-in robes
- Spacious living and dining area, leading to the balcony
- Contemporary kitchen with stone benchtops and Miele appliances

\$895 per week | Parking Included!

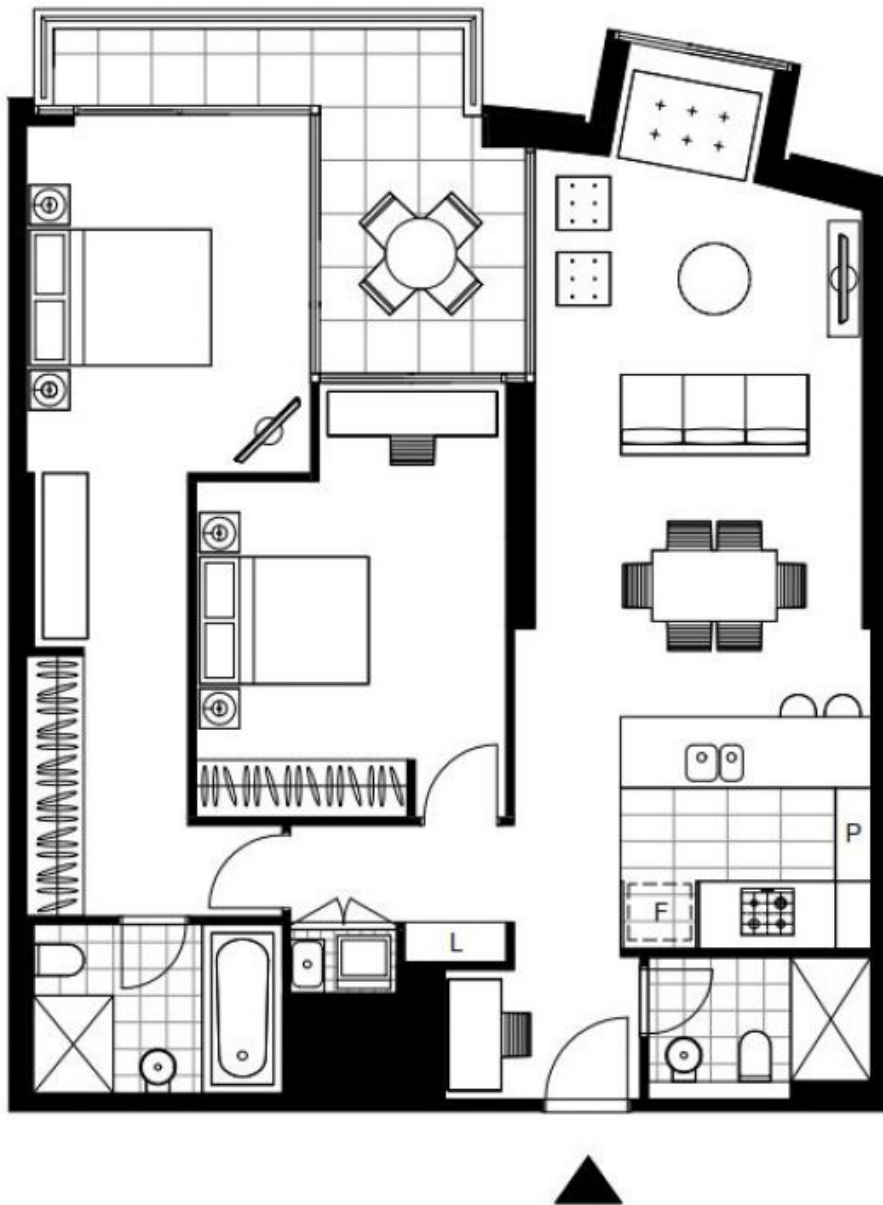
Contact: Naz Sabzpour
02 8588 8888
0401 545 440

Type: Apartment

Date Available: 10/06/2022

Bond: \$3580

<https://www.resbymirvac.com>



Plans shown are only indicative of layout. Dimensions are approximate.

Glebe, NSW
317/1A The Crescent