



**Glebe, NSW**  
317/1A The Crescent

**2** BED **2** BATH **1** CAR 

**Spacious and Sunny 2-Bedroom Apartment in Harold Park**

Welcome to Harold Park, Glebe's Secret Backyard.

Here in Harold Park you will find yourself in an idyllic parkside location, with only a short walk to Glebe Foreshore. Just meters away, The Tramsheds retail precinct resides featuring cafes, a grocery store, restaurants and a medical centre.

This 104sqm Apartment has to offer:

- Generous bedrooms with built-in robes
- Spacious living and dining area, leading to the balcony
- Contemporary kitchen with stone benchtops and Miele appliances

**\$895 per week | Parking Included!**

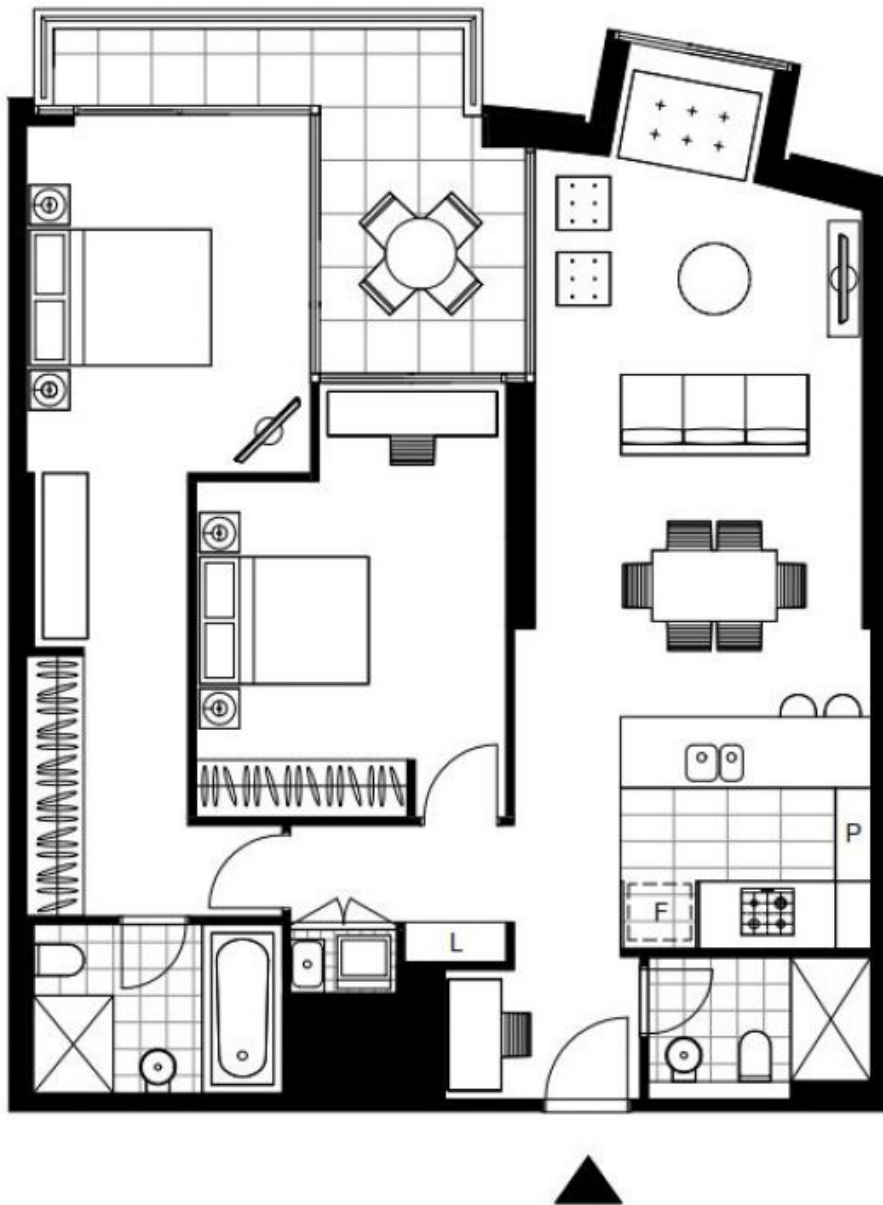
**Contact:** Naz Sabzpour  
02 8588 8888  
0401 545 440

**Type:** Apartment

**Date Available:** 10/06/2022

**Bond:** \$3580

<https://www.resbymirvac.com>



Plans shown are only indicative of layout. Dimensions are approximate.

**Glebe, NSW**  
317/1A The Crescent