



Zetland, NSW

907/8 Ebsworth Street

2
BED

2
BATH

1
CAR



Huge terrace ideal for those who value plenty of outdoor space

With a wide terrace that runs the full length of the property, this apartment will appeal to those who value space, style and alfresco entertaining. It showcases all the hallmarks one would expect of a Mirvac-built complex, including an artfully conceived minimalist aesthetic and sumptuous finishes. Positioned for lifestyle, it's footsteps to a buffet of cosmopolitan attractions.

- ? Sleek open plan kitchen and separate living/dining zones
- ? Stone breakfast bar, gas stainless steel Miele appliances
- ? Full-width alfresco entertaining terrace with covered area
- ? Bedrooms with built-ins and terrace access, one ensuite
- ? Stylish fully tiled bathrooms, internal laundry, air conditioning

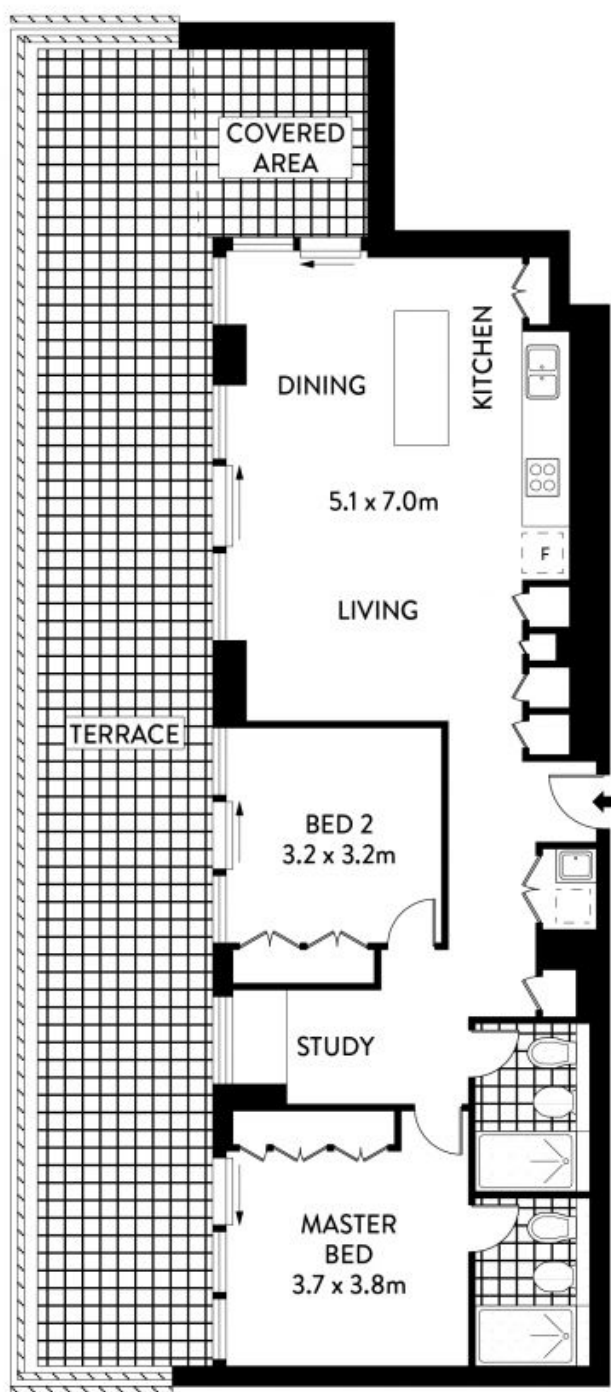
Contact Agent

Council Rates: \$286/qtr (approx)
Strata Rates: \$1,495/qtr (approx)
Contact: Matthew Matthews
 02 8588 8888
 0418 266 590

Type: Apartment

Sold Date: 01/07/2022

<https://www.resbymirvac.com>



LEVEL NINE



PLANS SHOWN ONLY INDICATIVE OF LAYOUT. DIMENSIONS ARE APPROXIMATE.
Floor plans by www.remaustralia.com
Ref. No: 15230

INTERNAL : 87m²
TERRACE : 57m²



real estate
services
by mirvac



Plans shown are only indicative of layout. Dimensions are approximate.

907/8 EBSWORTH STREET

ZETLAND

Zetland, NSW
907/8 Ebsworth Street