

Glebe, NSW
5605/148 Ross Street

2
BED

2
BATH

1
CAR



Large North-Facing 2-Bedroom Apartment in Harold Park

Welcome to Harold Park, Glebe's Secret Backyard.

Here in Harold Park you will find yourself in an idyllic parkside location, with only a short walk to Glebe Foreshore. Just meters away, The Tramsheds retail precinct resides featuring cafes, a grocery store, restaurants and a medical centre.

This 6th floor Apartment features:

This 99sqm, 6th floor Apartment features:

- Large split bedroom style apartment with each offering generous built-in wardrobes

\$900 per week | Deposit Taken

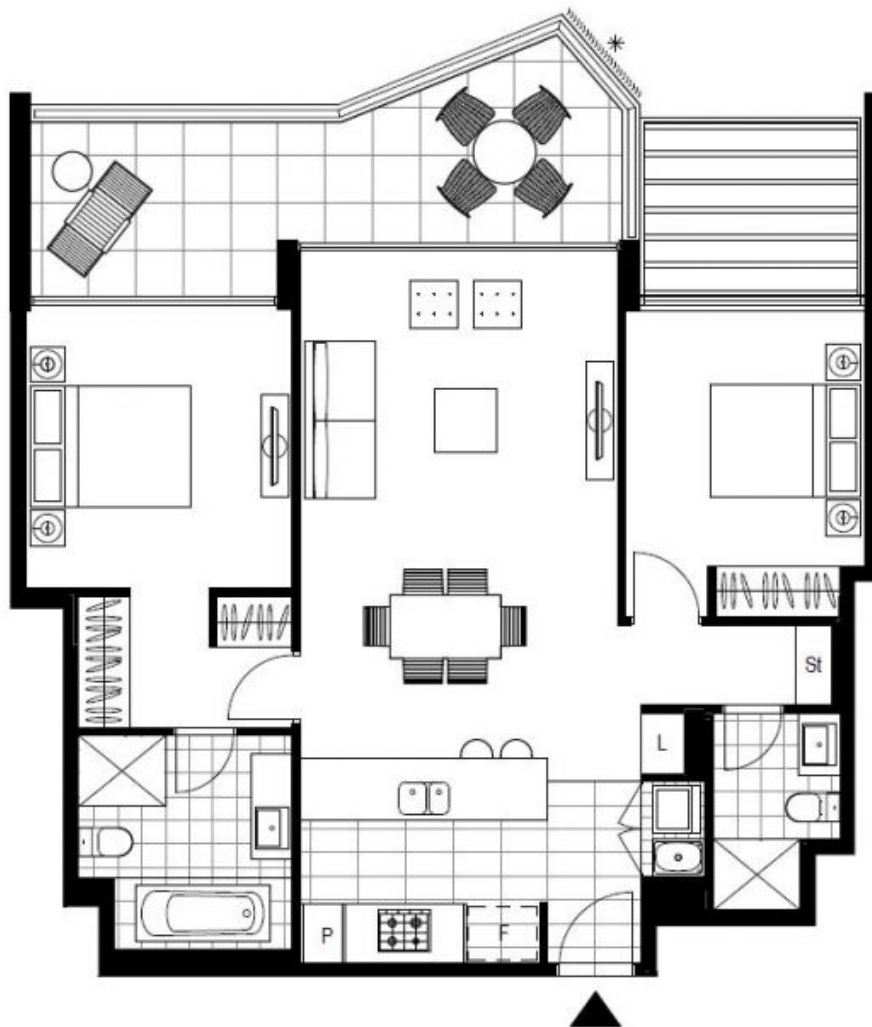
Contact: Naz Sabzpouri
02 8588 8888
0401 545 440

Type: Apartment

Date Available: 24/06/2022

Bond: \$3600

<https://www.resbymirvac.com>



LEVEL 4, 6

Plans shown are only indicative of layout. Dimensions are approximate.

Glebe, NSW
5605/148 Ross Street