

**Glebe, NSW**  
3607/21 Scotsman Street

**2** **2** **1**   
BED BATH CAR

### Modern 2-Bedroom Apartment in Harold Park

Welcome to Harold Park, Glebe's Secret Backyard.

Here in Harold Park you will find yourself in an idyllic parkside location, with only a short walk to Glebe Foreshore. Just meters away, The Tramsheds retail precinct resides featuring cafes, a grocery store, restaurants and a medical centre.

This 6th floor Apartment features:

- Large bedrooms with generous built-in wardrobes
- Generous living and dining area, leading to the balcony
- Modern kitchen with stone benchtops and Miele appliances
- Contemporary bathrooms with ample storage, ensuite of master bedroom

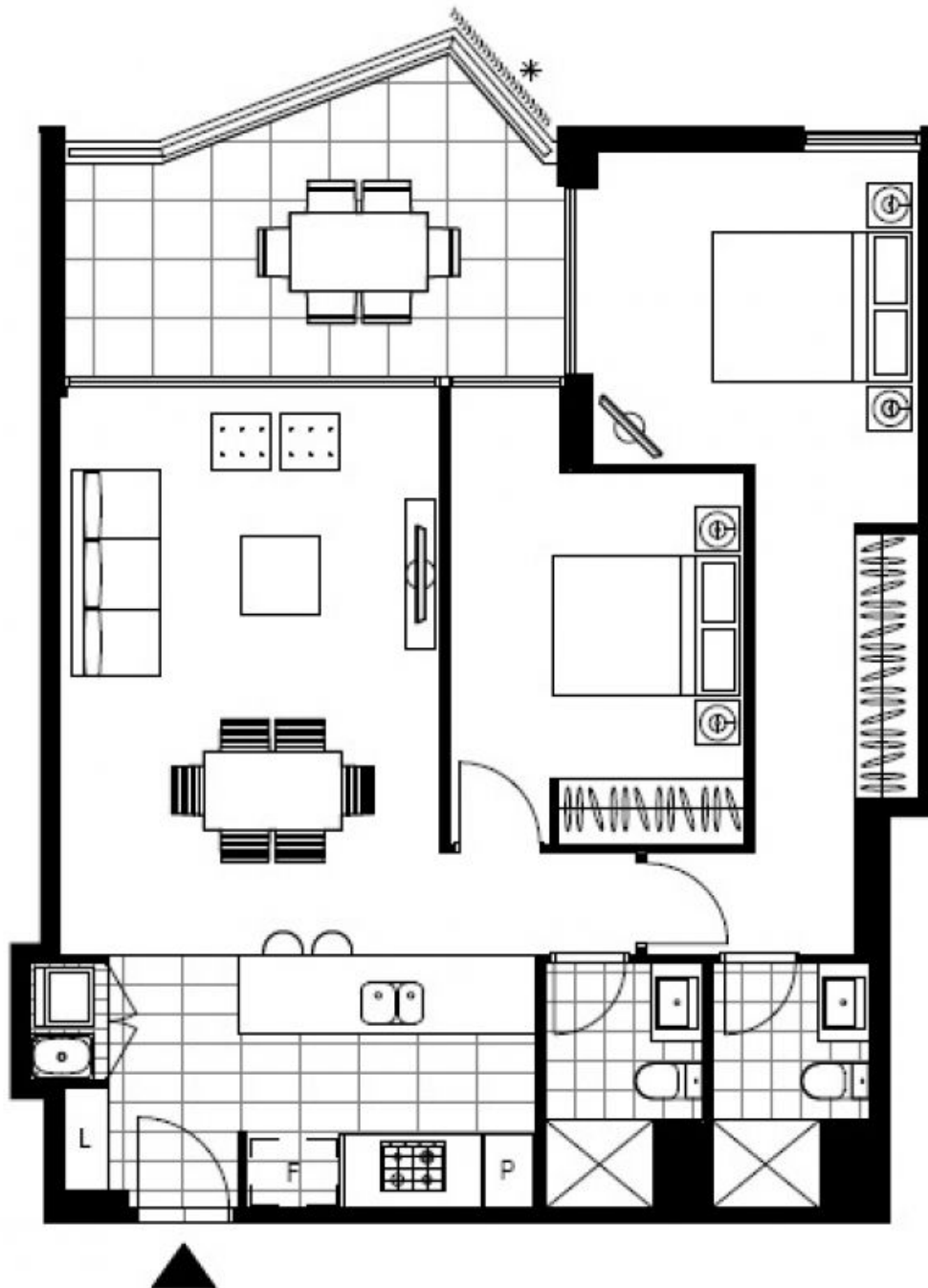
**\$870 per week | Deposit Taken!**

**Contact:** Naz Sabzpour  
02 8588 8888  
0401 545 440

**Type:** Apartment

**Date Available:** 23/06/2022

**<https://www.resbymirvac.com>**



Plans shown are only indicative of layout. Dimensions are approximate.

**Glebe, NSW**  
3607/21 Scotsman Street