



## Glebe, NSW

813/159 Ross Street Street

**2** **2** **1** **RES**  
BED BATH CAR

### Sunny 2-Bedroom Apartment in Harold Park

Welcome to Harold Park, Glebe's Secret Backyard.

Here in Harold Park you will find yourself in an idyllic parkside location, with only a short walk to Glebe Foreshore. Just meters away, The Tramsheds retail precinct resides featuring cafes, a grocery store, restaurants and a medical centre.

This Top Floor Apartment features:

- Spacious bedrooms with generous built-in wardrobes
- Modern kitchen with stone benchtops and Miele appliances
- Large balcony, perfect for entertaining
- Open-plan living and dining area

**\$865 per week | Deposit Taken**

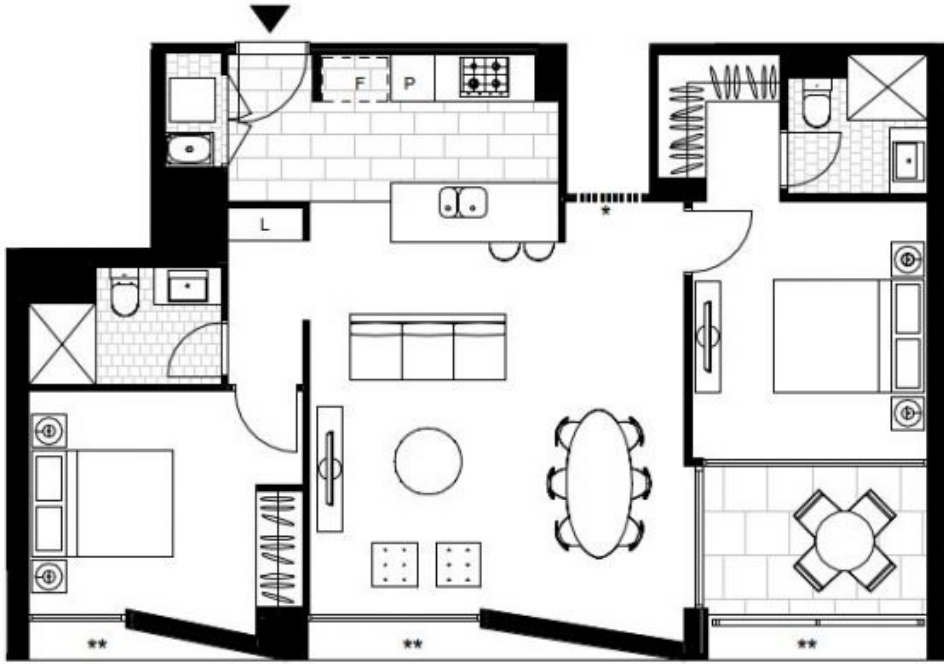
**Contact:** Naz Sabzpour  
02 8588 8888  
0401 545 440

**Type:** Apartment

**Date Available:** 21/06/2022

**Bond:** \$3460

<https://www.resbymirvac.com>



Plans shown are only indicative of layout. Dimensions are approximate.

**Glebe, NSW**  
813/159 Ross Street Street