

Zetland, NSW
407/6 Ebsworth Street

2 BED **2** BATH **1** CAR 

Sophisticated lifestyle near shops, cafes and Green Square rail

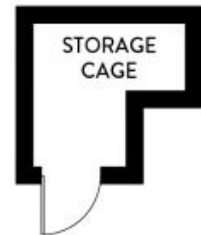
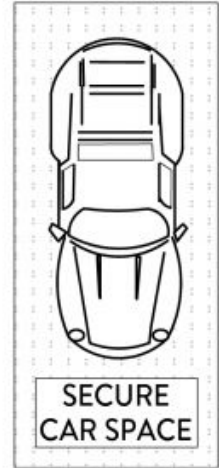
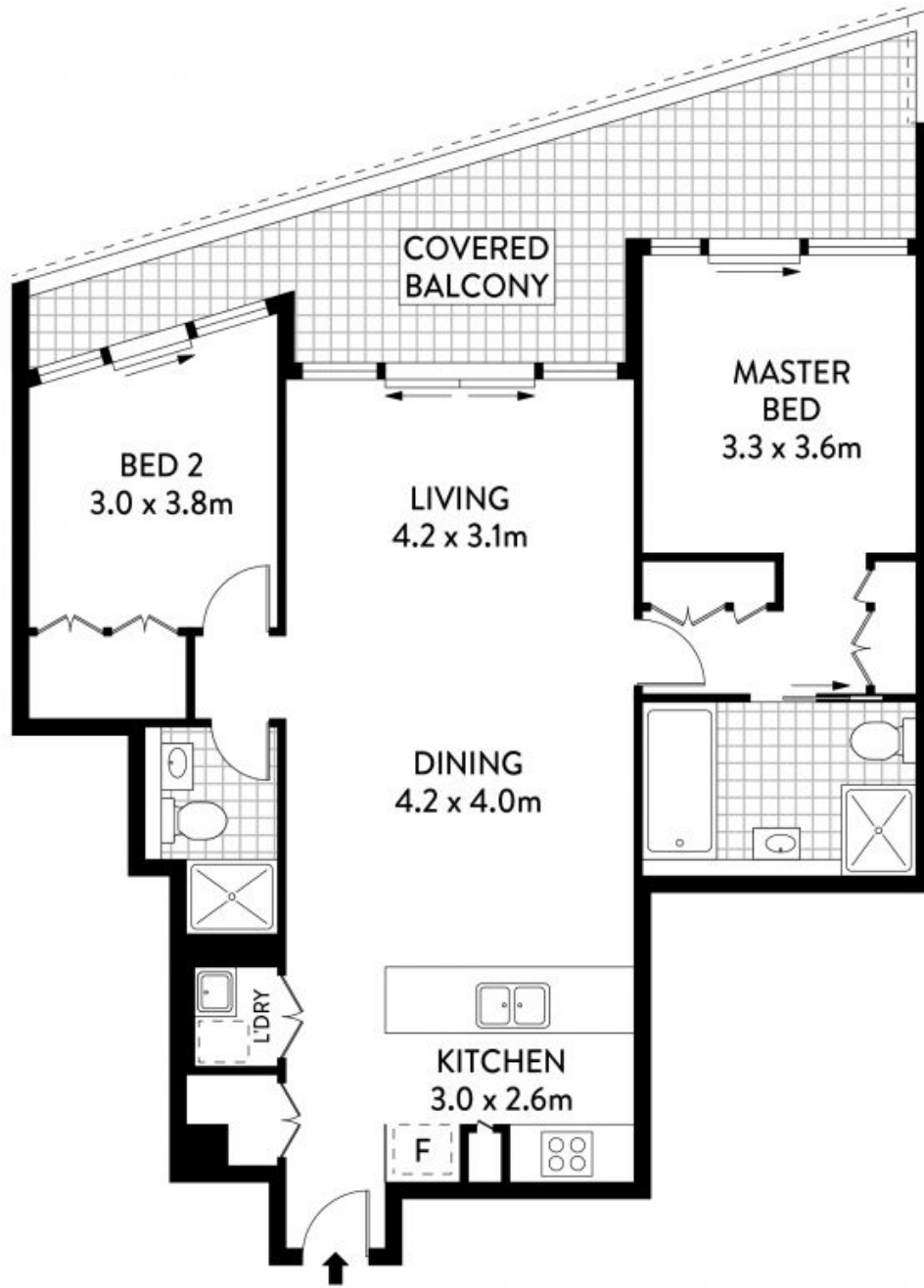
Immersed in the heart of one of Sydney's most exciting new urban communities, this apartment promises a cosmopolitan lifestyle. It embraces a sleek modern design with a vast open plan indoor/outdoor flow, floor-to-ceiling windows and an abundance of natural light. Enjoy an active social life with shopping, dining and cultural attractions at your doorstep.

- ? High-end finishes and inclusions appoint the roomy interiors
- ? Generous living/dining room flowing to a covered terrace
- ? Stone kitchen, gas stainless steel Miele cooking, dishwasher
- ? Sizeable bedrooms with built-in robes and terrace access
- ? Stylish bathrooms, internal laundry, ducted air conditioning

Sold \$1,180,000

Council Rates: \$285/qtr (approx)
Strata Rates: \$1,444/qtr (approx)
Contact: Matthew Matthews
 02 8588 8888
 0418 266 590
 William Kwok
 0285888888
 0481 702 370

Type: Apartment
Sold Date: 24/01/2023
Land: 107Square Metres
<https://www.resbymirvac.com>



LEVEL FOUR



PLANS SHOWN ONLY INDICATIVE OF LAYOUT. DIMENSIONS ARE APPROXIMATE.
Floor plans by www.remaustralia.com
Ref. No: 15214

INTERNAL	: 87.97m ²
BALCONY	: 19.24m ²
STOAREG CAGE	: 2.43m ²
CAR SPACE	: 13.20m ²

NOTE :- STORAGE CAGE



Plans shown are only indicative of layout. Dimensions are approximate.

407/6 EBSWORTH STREET

ZETLAND

Zetland, NSW
407/6 Ebsworth Street