



## Glebe, NSW

17 Minogue Crescent

1 BED 1 BATH 1 CAR 

### Oversized 1-Bedroom Apartment with Parking and a Courtyard with Street Access

Welcome to Harold Park, Glebe's Secret Backyard.

Here in Harold Park you will find yourself in an idyllic parkside location, with only a short walk to Glebe Foreshore. Just meters away, The Tramsheds retail precinct resides featuring cafes, a grocery store, restaurants and a medical centre.

This 77sqm 1-Bedroom Apartment features:

- Large bedroom with floor to ceiling built-in wardrobe
- Open-plan living and dining area
- Modern kitchen with stone benchtop and Miele appliances

**\$660 per week | Deposit taken**

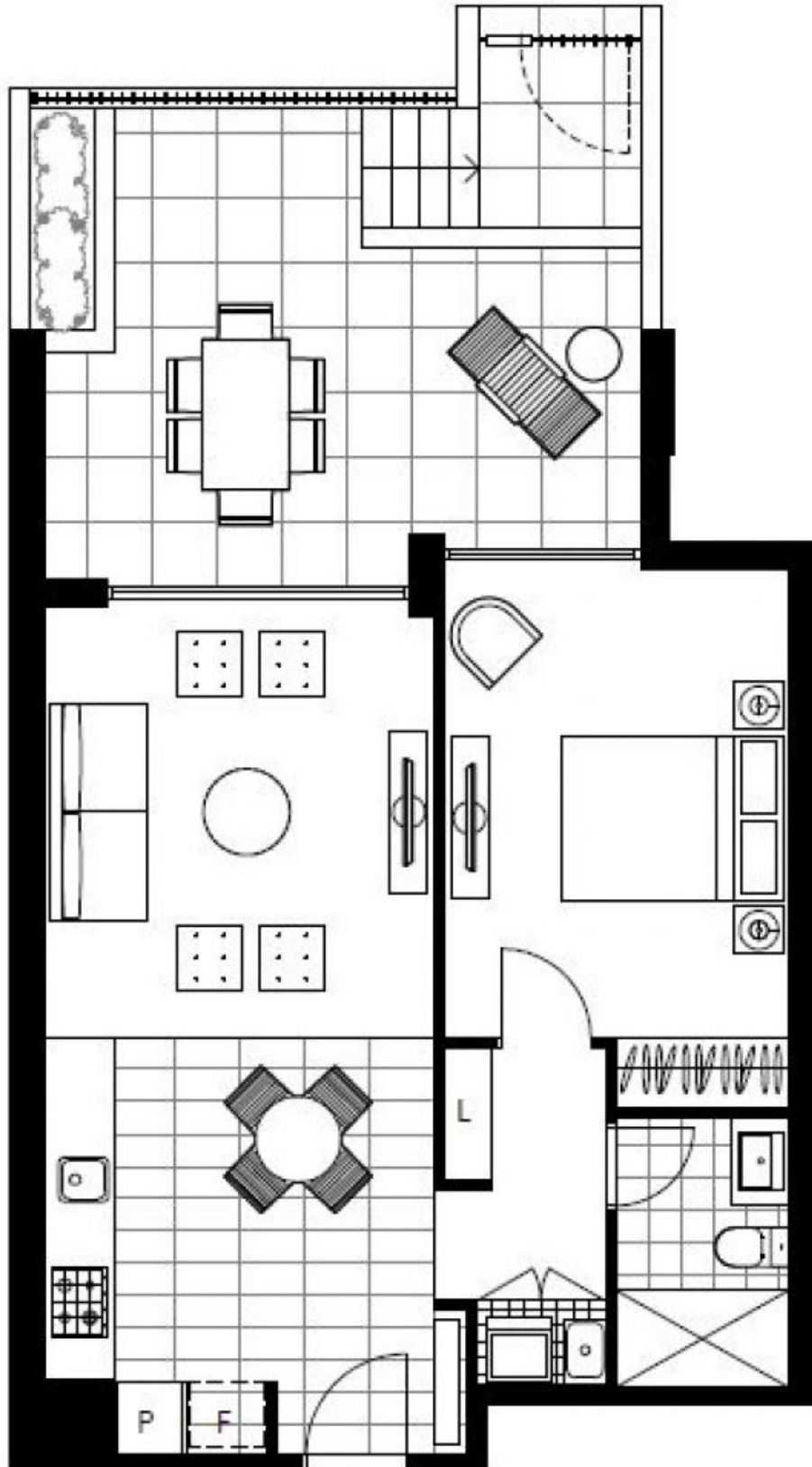
**Contact:** Naz Sabzpouri  
02 8588 8888  
0401 545 440

**Type:** Apartment

**Date Available:** 09/06/2022

**Bond:** \$2640

<https://www.resbymirvac.com>



Plans shown are only indicative of layout. Dimensions are approximate.

**Glebe, NSW**  
17 Minogue Crescent