



Glebe, NSW

17 Minogue Crescent

1
BED

1
BATH

1
CAR



Oversized 1-Bedroom Apartment with Parking and a Courtyard with Street Access

Welcome to Harold Park, Glebe's Secret Backyard.

Here in Harold Park you will find yourself in an idyllic parkside location, with only a short walk to Glebe Foreshore. Just meters away, The Tramsheds retail precinct resides featuring cafes, a grocery store, restaurants and a medical centre.

This 77sqm 1-Bedroom Apartment features:

- Large bedroom with floor to ceiling built-in wardrobe
- Open-plan living and dining area
- Modern kitchen with stone benchtop and Miele appliances

\$660 per week | Deposit taken

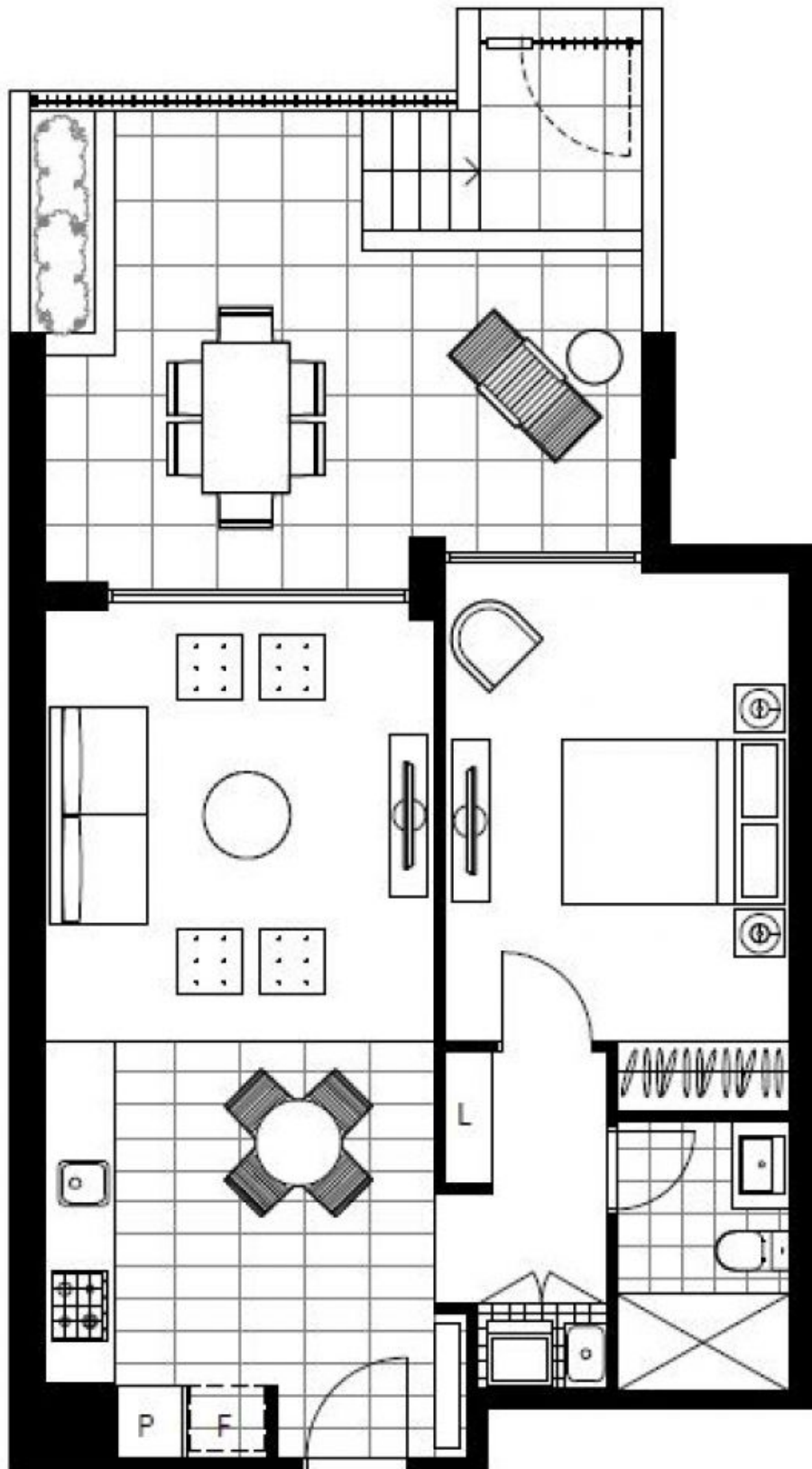
Contact: Naz Sabzpouri
02 8588 8888
0401 545 440

Type: Apartment

Date Available: 09/06/2022

Bond: \$2640

<https://www.resbymirvac.com>



Plans shown are only indicative of layout. Dimensions are approximate.

Glebe, NSW
17 Minogue Crescent