

Zetland, NSW

610/28 Ebsworth Street

2
BED

2
BATH

1
CAR



Partially-Furnished 2 Bedroom Apartment with City Views + Parking in Green Square

Welcome to Green Square, where city meets community living.

Here in Green Square you will find yourself located within minutes of cafes, shops, public transport and award winning amenities such as the new Gunyama Aquatic and Recreation Centre and Green Square Library.

This oversized 114sqm, 6th floor apartment features:

- Generously appointed bedrooms with built-in wardrobes, walk-in robe in main
- Spacious open-plan living and dining area
- Modern kitchen with stone benchtop and built-in European appliances

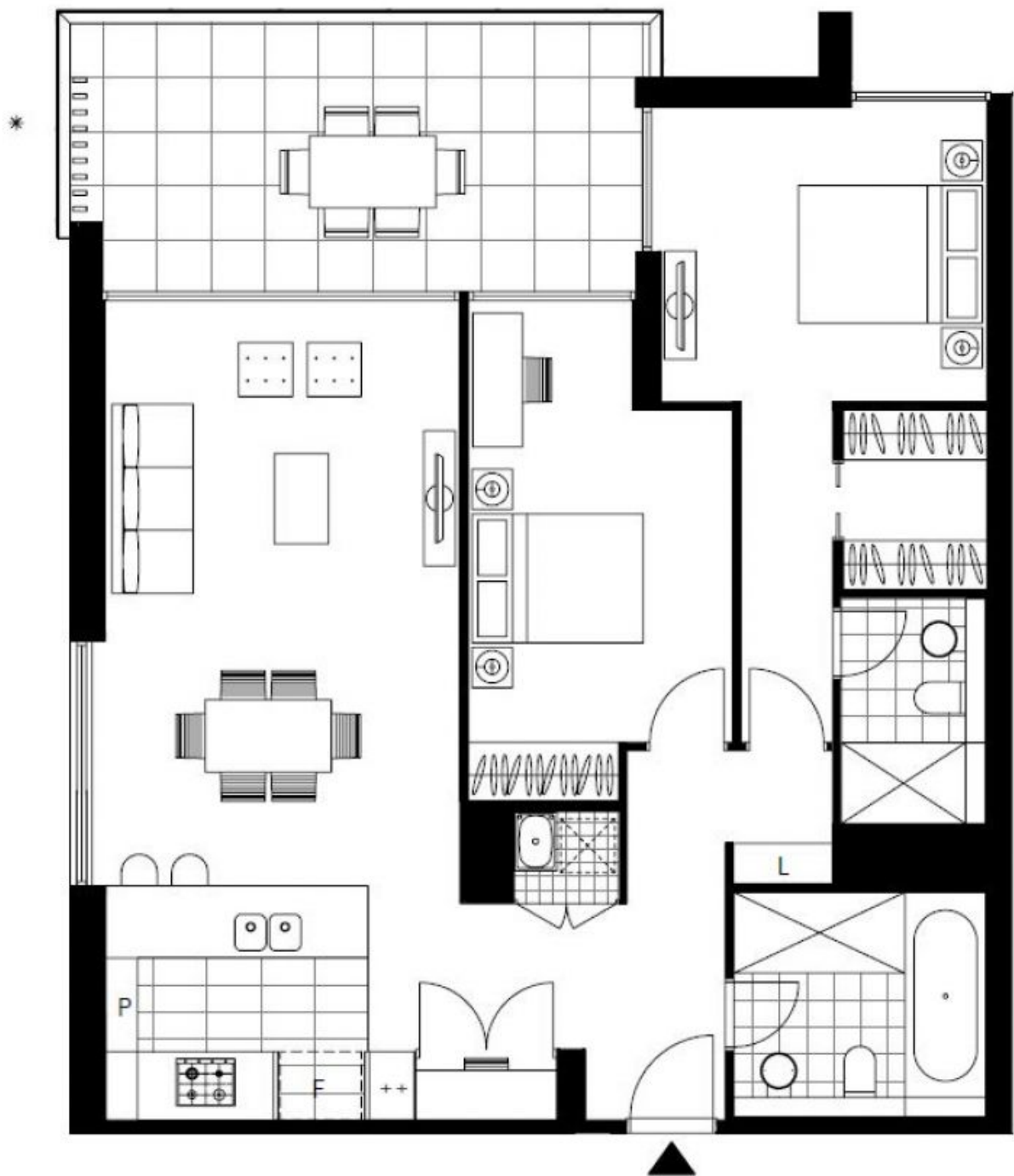
DEPOSIT TAKEN

Contact: Carmen Whiteley
02 8588 8888
0497 555 519

Type: Apartment

Date Available: 23/05/2022

<https://www.resbymirvac.com>



Plans shown are only indicative of layout. Dimensions are approximate.

Zetland, NSW
610/28 Ebsworth Street