



## DOCKLANDS, VIC

1807/81 South Wharf Drive

1  
BED

1  
BATH

1  
CAR



### Stylish apartment in prime location

Located in Mirvac's prestigious 'Forge' tower in the Yarra's Edge precinct. This expansive 1 Bedroom apartment features;

Open plan living and dining experience  
Integrated fridge/ freezer, Smeg appliances

Sizeable bedroom  
Enclosed winter garden

Video intercom  
Secure parking X1

### \$450 per week

**Contact:** Aleiasha Clark  
03 9645 1199  
0491 174 507

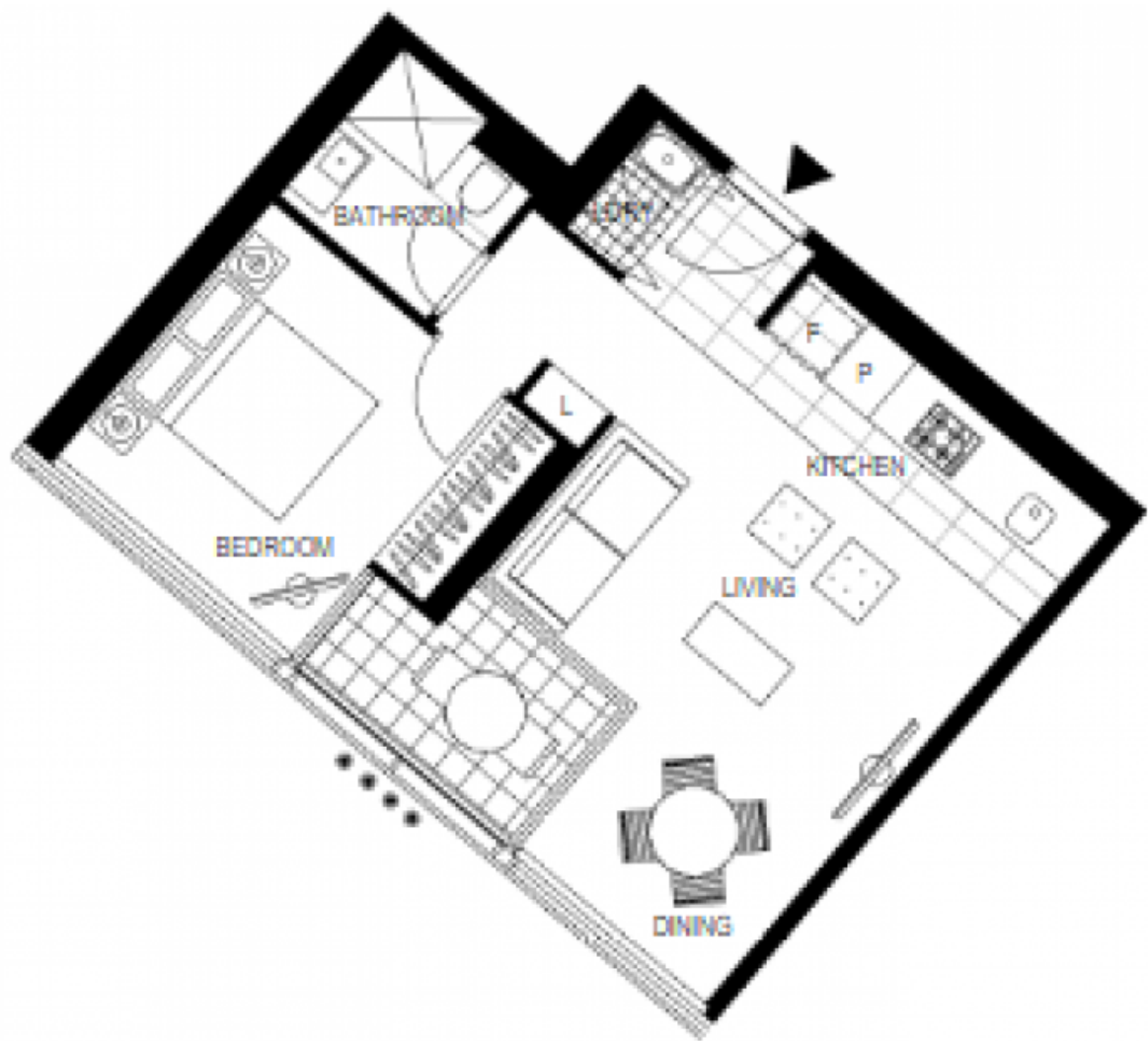
**Type:** Apartment

**Date Available:** 03/06/2022

**Leased Date:** 06/06/2022

**Bond:** \$1955

<https://www.resbymirvac.com>



Plans shown are only indicative of layout. Dimensions are approximate.

**DOCKLANDS, VIC**  
1807/81 South Wharf Drive