



DOCKLANDS, VIC
1801/70 Lorimer Street

4 BED **2** BATH **2** CAR



Experience THE BEST floorplan in Yarra's Edge
Guaranteeing a lifestyle of luxury and stellar views, this spectacular 4Bedroom sub-penthouse features:

- ? Stylish furnishings
- ? Fantastic wraparound balcony promises views to the north plus the Yarra River and iconic city skyline
- ? Expansive family and dining zone with high quality flooring also offers remarkable views
- ? Entertainers' kitchen with stone benchtops, great sized pantry & cupboards
- ? Secluded casual meals off kitchen with superb CBD vistas
- ? Master bedroom boasts ample BIR storage and ensuite

FURNISHED | \$1,600PW

Contact: Aleisha Clark
03 9645 1199
0491 174 507
Andrew Chen

Type: ~~Apartment~~ **Sub Penthouse**

Date Available: 25/05/2022

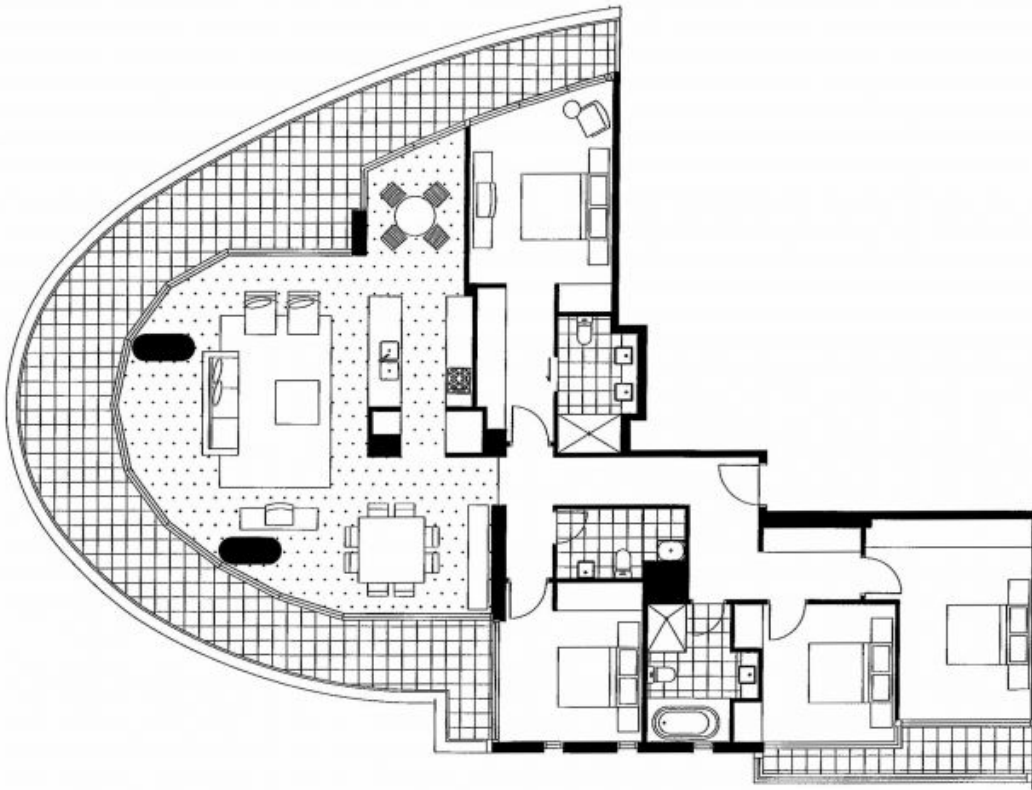
Leased Date: 01/06/2022

Bond: \$9600

<https://www.resbymirvac.com>

Living	5.0 x 6.5	Bedroom 1	3.2 x 4.1	Plus Robe
Breakfast	2.2 x 3.3	Bedroom 2	3.0 x 3.9	Plus Robe
Dining	3.5 x 3.6	Bedroom 3	2.9 x 3.1	Plus Robe
		Bedroom 4	3.0 x 3.3	Plus Robe

Please note that this floor plan is a guide only.
The information contained herein is not guaranteed.
Dimensions are approximate. Prospect purchasers
must rely on their own enquiries.



Plans shown are only indicative of layout. Dimensions are approximate.

DOCKLANDS, VIC
1801/70 Lorimer Street