



**DOCKLANDS, VIC**  
1801/70 Lorimer Street

**4** BED **2** BATH **2** CAR



**Experience THE BEST floorplan in Yarra&apos;s Edge**  
Guaranteeing a lifestyle of luxury and stellar views, this spectacular 4Bedroom sub-penthouse features:

- ? Stylish furnishings
- ? Fantastic wraparound balcony promises views to the north plus the Yarra River and iconic city skyline
- ? Expansive family and dining zone with high quality flooring also offers remarkable views
- ? Entertainers' kitchen with stone benchtops, great sized pantry & cupboards
- ? Secluded casual meals off kitchen with superb CBD vistas
- ? Master bedroom boasts ample BIR storage and ensuite

**FURNISHED | \$1,600PW**

**Contact:** Aleisha Clark  
03 9645 1199  
0491 174 507  
Andrew Chen

**Type:** ~~Apartment~~ **Sub Penthouse**

**Date Available:** 25/05/2022

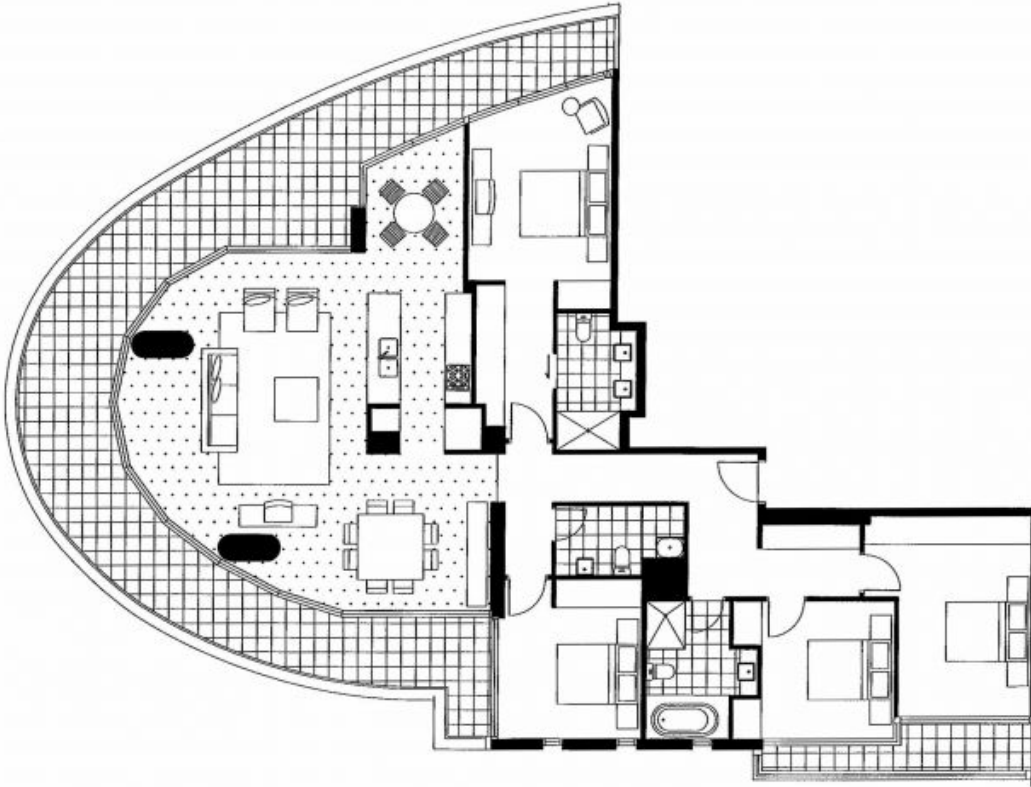
**Leased Date:** 01/06/2022

**Bond:** \$9600

<https://www.resbymirvac.com>

Living	5.0 x 6.5	Bedroom 1	3.2 x 4.1	Plus Robe
Breakfast	2.2 x 3.3	Bedroom 2	3.0 x 3.9	Plus Robe
Dining	3.5 x 3.6	Bedroom 3	2.9 x 3.1	Plus Robe
		Bedroom 4	3.0 x 3.3	Plus Robe

Please note that this floor plan is a guide only.  
The information contained herein is not guaranteed.  
Dimensions are approximate. Prospect purchasers  
must rely on their own enquiries.



Plans shown are only indicative of layout. Dimensions are approximate.

**DOCKLANDS, VIC**  
1801/70 Lorimer Street