



Glebe, NSW
2607/7 Scotsman Street

2 **2** **1** **RES**
BED BATH CAR

Stylish 2-Bedroom Apartment in Harold Park

Welcome to Harold Park, Glebe's Secret Backyard.

Here in Harold Park you will find yourself in an idyllic parkside location, with only a short walk to Glebe Foreshore. Just meters away, The Tramsheds retail precinct resides featuring cafes, a grocery store, restaurants and a medical centre.

This 6th floor Apartment features:

- Spacious bedrooms with generous built-in wardrobes
- Modern kitchen with stone benchtops and Miele appliances
- Large balcony, perfect for entertaining
- Open-plan living and dining area

\$850 per week | Deposit Taken

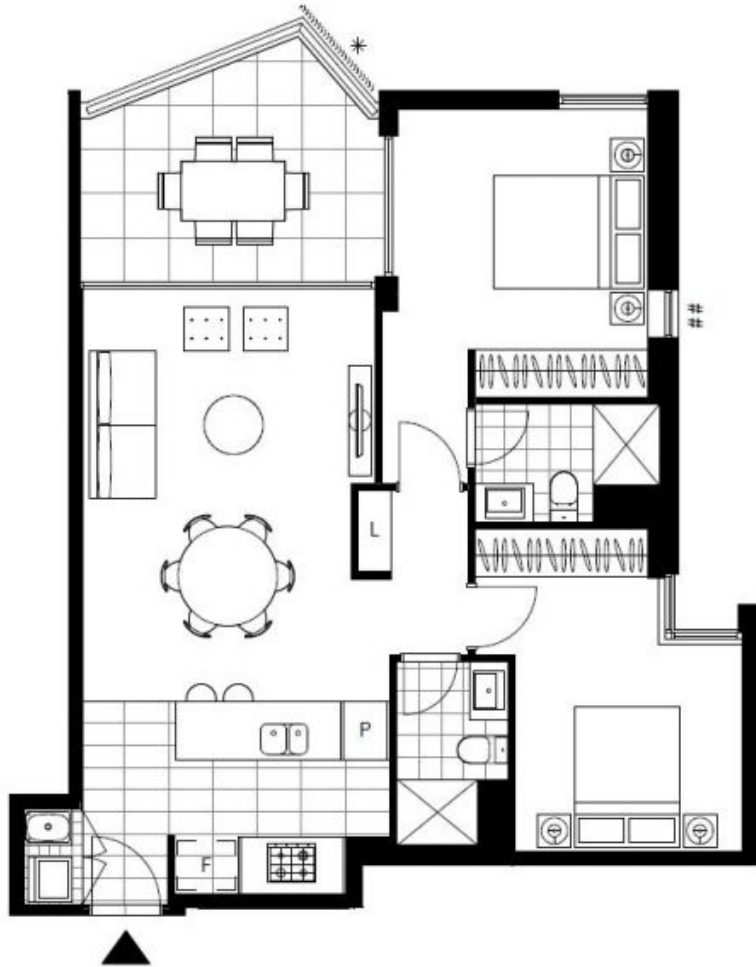
Contact: Naz Sabzpour
02 8588 8888
0401 545 440

Type: Apartment

Date Available: 08/06/2022

Bond: \$3400

<https://www.resbymirvac.com>



Plans shown are only indicative of layout. Dimensions are approximate.

Glebe, NSW
2607/7 Scotsman Street