



DONCASTER, VIC
G03/65 Stables Circuit

1 BED **1** BATH **1** CAR



UNDER OFFER | 2BEDROOM APARTMENT COMING SOON | CONTACT ALEIASHA

This Phoenix apartment is set to elevate your lifestyle with lush surrounds and bespoke finishing's. This apartment also features;

- Large internal space of 50m2
- Generous courtyard ? 14m2
- European laundry
- Video intercom entrance
- Secure parking X1
- Stainless steel Miele appliances including integrated dishwasher

Exceptional facilities are on offer to all residents of Phoenix comprising of Resident's courtyard terrace with teppanyaki grill and dining area and a stunning lobby area. Nestled within Mirvac's award winning Tullamore estate you're within close proximity to cafes, restaurants

and Westfield's Doncaster shopping precinct.

**UNDER OFFER | 2BED COMING
SOON**

Contact: Aleiasha Clark
03 9645 1199
0491 174 507

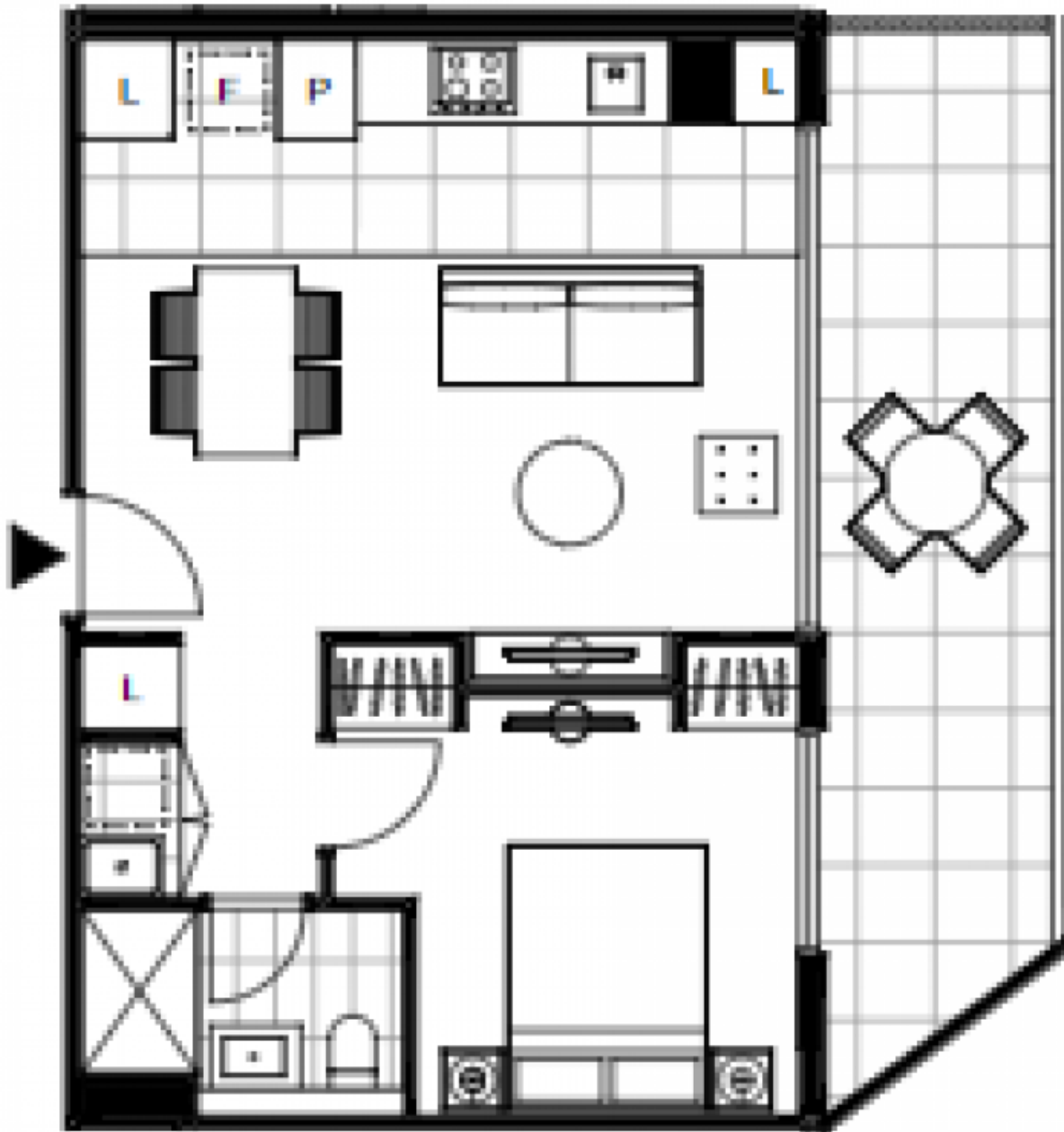
Type: Apartment

Date Available: 16/05/2022

Leased Date: 03/06/2022

Bond: \$1738

<https://www.resbymirvac.com>



Plans shown are only indicative of layout. Dimensions are approximate.

DONCASTER, VIC
G03/65 Stables Circuit