



Zetland, NSW

202/6 Ebsworth Street

1
BED

1
BATH



Oversized 1-Bedroom Apartment near Green Square Station

Welcome to Green Square, where city meets community living.

Here in Green Square you will find yourself located within minutes of cafes, shops, public transport and award winning amenities such as the new Gunyama Aquatic and Recreation Centre and Green Square Library.

This 60sqm, 2nd floor apartment features:

- Generously sized bedroom with built-in wardrobes
- Spacious living and dining area with access to balcony
- Sleek kitchen with stone benchtops and built-in European appliances
- Modern bathroom with plenty of vanity storage

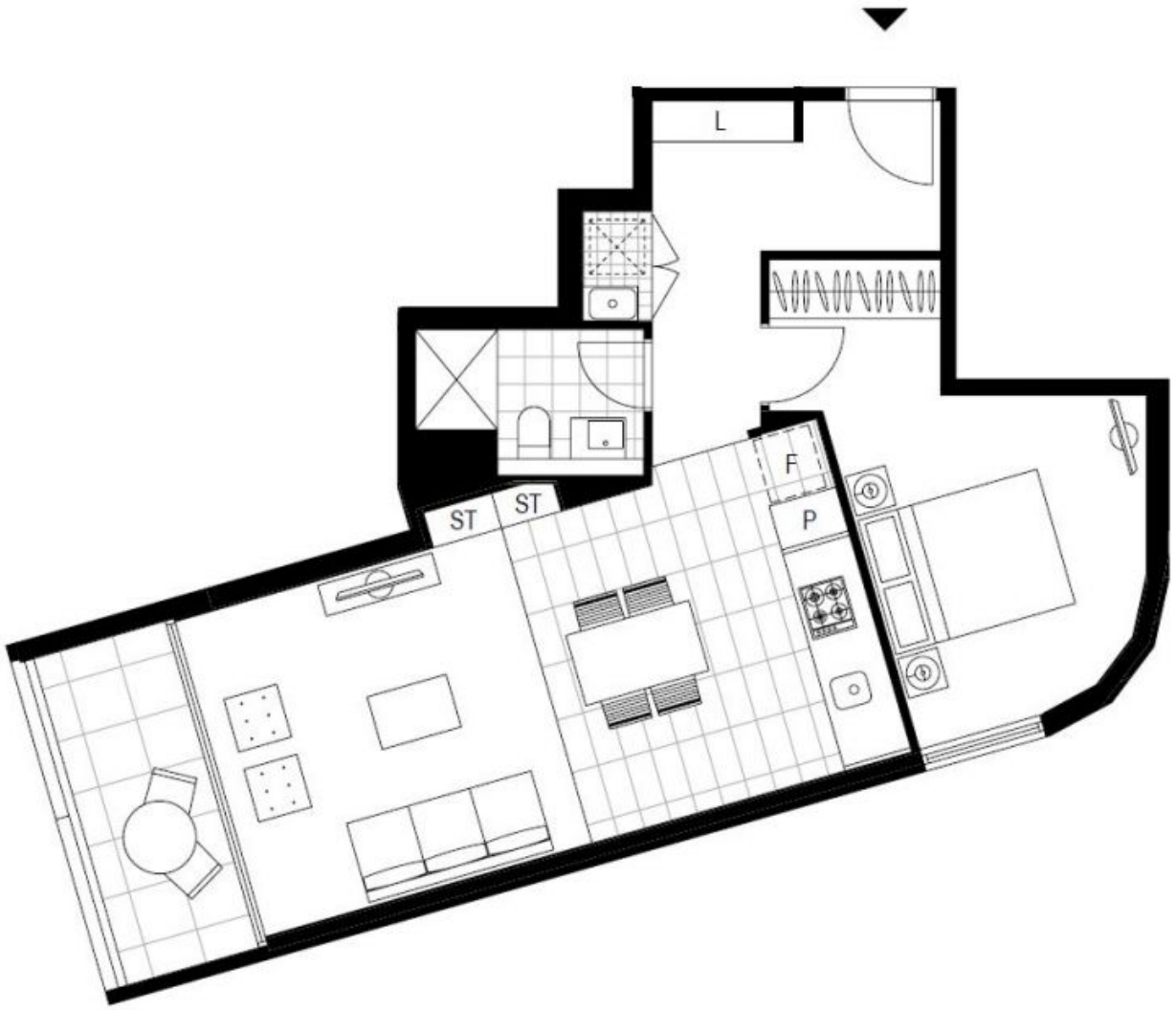
DEPOSIT TAKEN

Contact: Carmen Whiteley
02 8588 8888
0497 555 519

Type: Apartment

Date Available: 03/06/2022

<https://www.resbymirvac.com>



Plans shown are only indicative of layout. Dimensions are approximate.

Zetland, NSW
202/6 Ebsworth Street