



## Glebe, NSW

1212/1 Scotsman Street

**1**  
BED

**1**  
BATH



### Spacious 1-Bedroom Apartment in Parkside Location

Welcome to Harold Park, Glebe's Secret Backyard.

Here in Harold Park you will find yourself in an idyllic parkside location, with only a short walk to Glebe Foreshore. Just meters away, The Tramsheds retail precinct resides featuring cafes, a grocery store, restaurants and a medical centre.

This Mirvac apartment features:

- Well appointed bedroom with built-in wardrobes
- Flowing living and dining area, with access to balcony
- Sleek kitchen with stone benchtop and built-in Miele appliances
- Modern bathroom with plenty of vanity storage

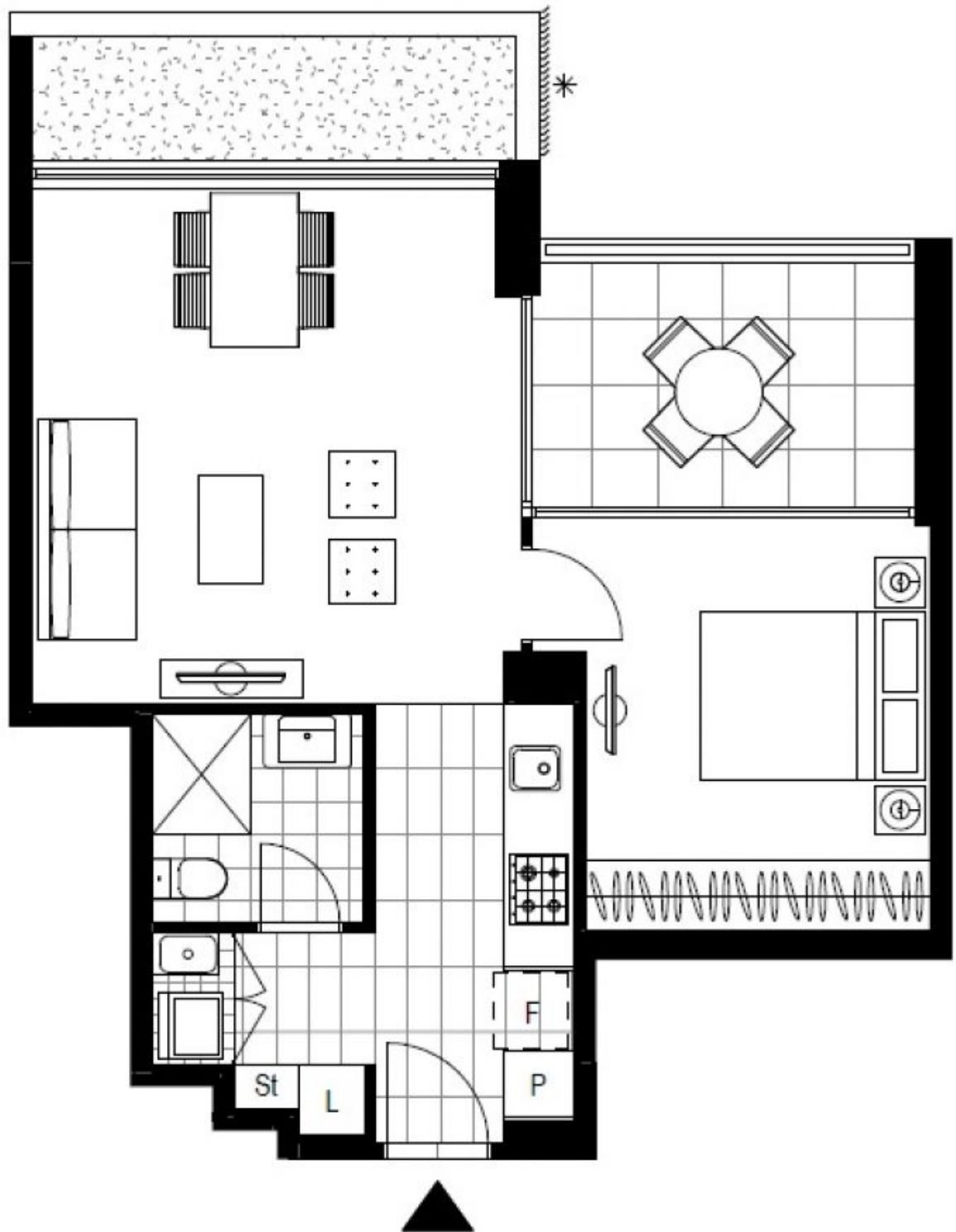
### \$550 per week | Deposit Taken

**Contact:** Naz Sabzpouri  
02 8588 8888  
0401 545 440

**Type:** Apartment

**Date Available:** 27/05/2022

<https://www.resbymirvac.com>



LEVEL 2

Plans shown are only indicative of layout. Dimensions are approximate.

**Glebe, NSW**  
1212/1 Scotsman Street