



EAST MELBOURNE, VIC

908/296 Victoria Parade

1 BED **1** BATH **1** CAR



A splendid sunrise from The Eastbourne

Imagine living opposite Fitzroy Gardens in The Eastbourne apartment complex. Where elegance is timeless in this stunning one bedroom apartment, defined by bespoke luxury and style.

Features include:

- ? Generous living area opens to a balcony
- ? Miele equipped kitchen
- ? Sleek bathroom plus European laundry
- ? Ducted heating and cooling
- ? Video intercom entry
- ? Storage cage
- ? Secure car space

Tranquil oasis | \$600pw

Contact: Aleiasha Clark
03 9645 1199
0491 174 507

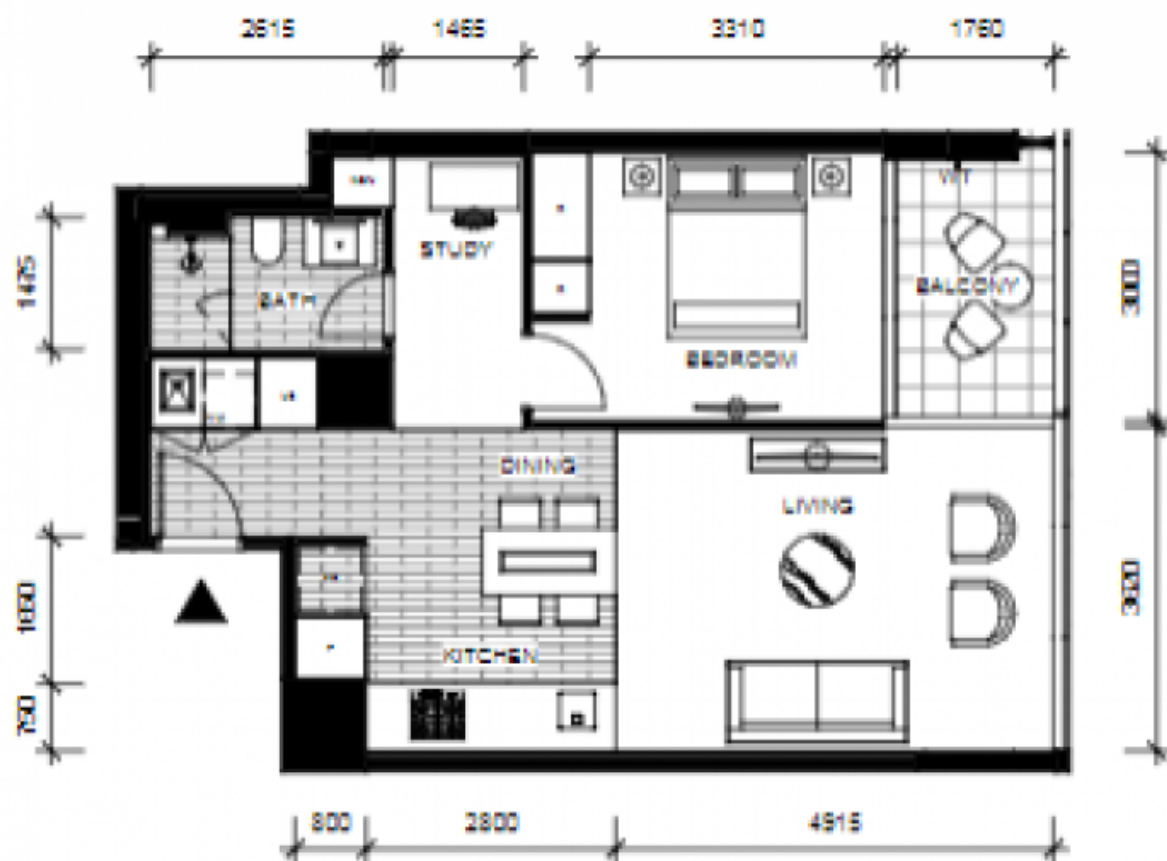
Type: Apartment

Date Available: 20/05/2022

Leased Date: 01/06/2022

Bond: \$2607

<https://www.resbymirvac.com>



LEVEL 6V, 7V, 8V, 9V, 10V, 11V, 12V, 13V, 14V

Plans shown are only indicative of layout. Dimensions are approximate.

EAST MELBOURNE, VIC
908/296 Victoria Parade