



St Leonards, NSW

608/472 Pacific Highway

2 BED **2** BATH **1** CAR 

Sleek contemporary living in a luxurious resort-style building

Designed for immaculate contemporary living and open plan in/outdoor entertaining, this apartment boasts enviable resort-style living in the new 'St Leonards Square' building. Quality appointments ensure there's nothing to spend and everything to enjoy. The building promotes an active lifestyle with a shared indoor lap pool, gym, spa, sauna, function rooms and terrace.

- ? Spacious gourmet open plan indoor/outdoor entertaining
- ? Stone kitchen, gas stainless steel Miele cooking, dishwasher
- ? Generous bedrooms with built-in robes, one with an ensuite
- ? Stylish fully tiled bathrooms, internal laundry, air conditioning
- ? Security entrance, lift access, secure underground parking

Sold \$1,202,000

Council Rates: \$352/qtr (approx)

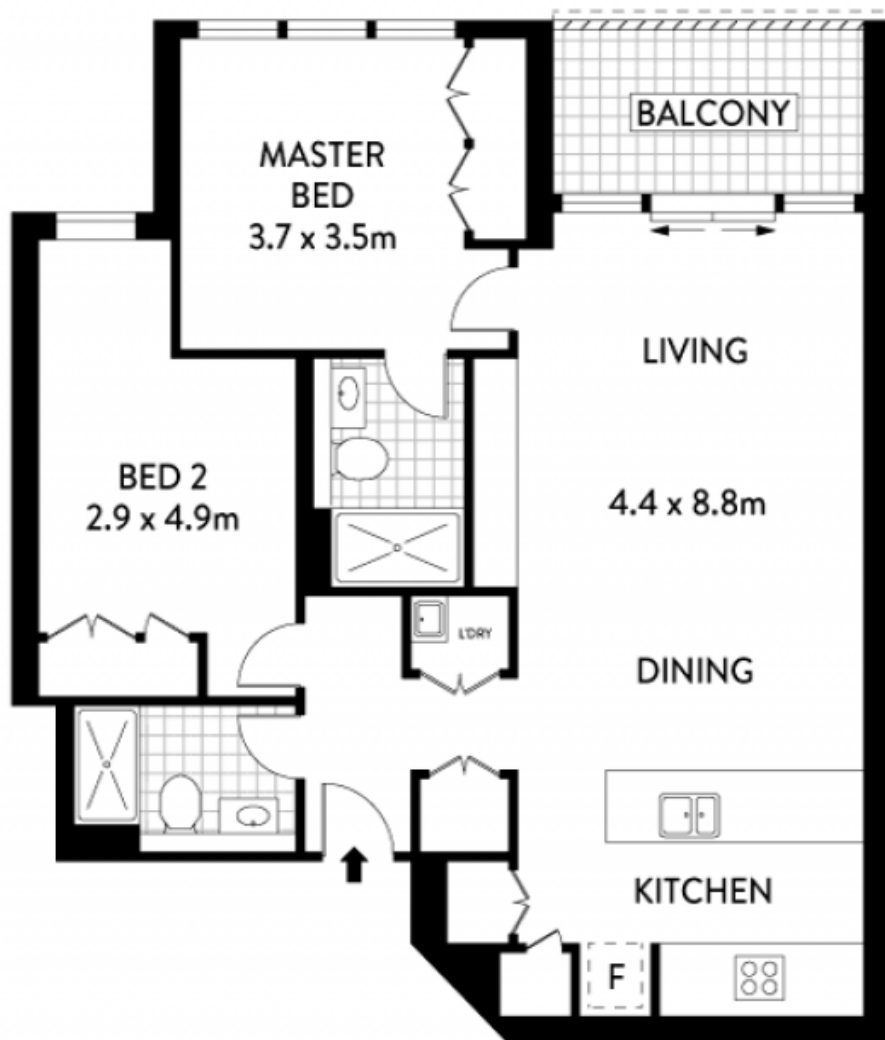
Strata Rates: \$1,562/qtr (approx)

Contact: Real Estate Services by Mirvac
02 8588 8888

Type: Apartment

Sold Date: 30/03/2023

<https://www.resbymirvac.com>



LEVEL SIX



PLANS SHOWN ONLY INDICATIVE OF LAYOUT. DIMENSIONS ARE APPROXIMATE.
Plans shown are only indicative of layout. Dimensions are approximate.
Ref. No. 15190

INTERNAL	: 77.00m ²
BALCONY	: 6.00m ²
STOAREG CAGE	: 2.00m ²
CAR SPACE	: 13.75m ²

NOTE :- STORAGE CAGE



St Leonards, NSW
608/472 Pacific Highway