

St Leonards, NSW
2805/486 Pacific Highway

2 BED **2** BATH **1** CAR

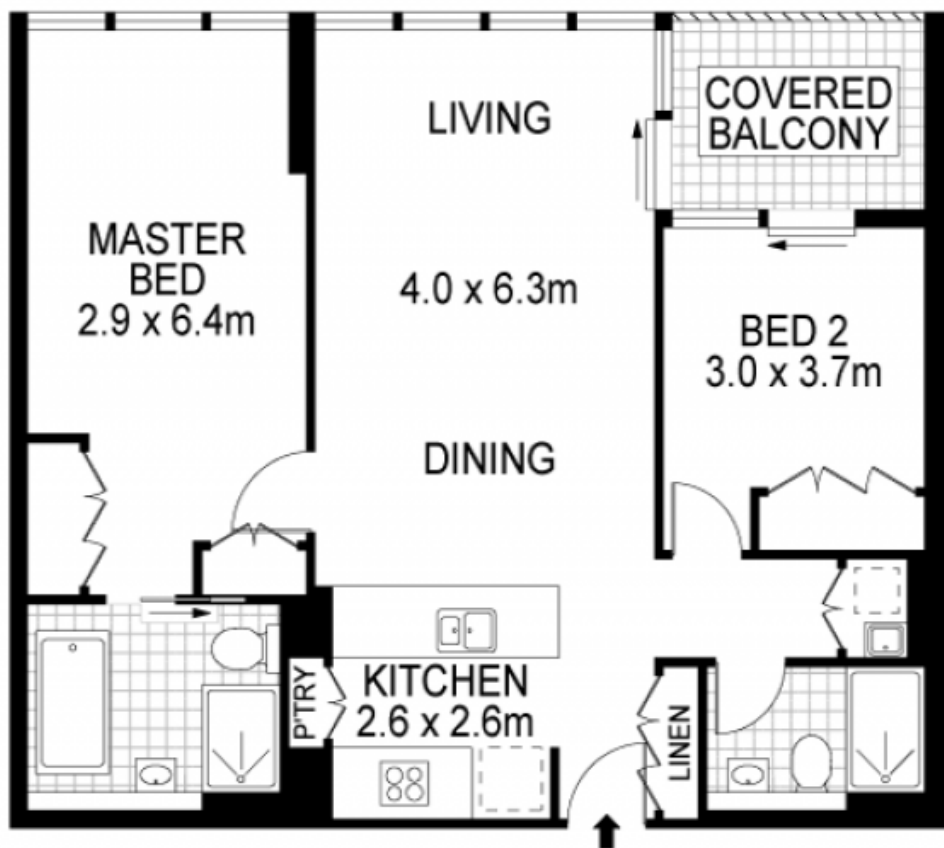


Skyline views and resort-style living in a luxury building

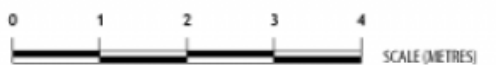
With sweeping westerly views of the Parramatta River and beyond, this apartment promises a lifestyle of sophistication in the resort-style 'St Leonards Square' building. Stay in and enjoy sleek open plan in/outdoor entertaining or step out to the building's gorgeous shared indoor lap pool, gym, spa, sauna, function rooms and terrace. Step out to shops and cafes.

- ? Floor-to-ceiling glass windows with dazzling day/night views
- ? Open plan kitchen, living/dining flow to covered balcony
- ? Stone bench tops and gas stainless steel Miele appliances
- ? Generous bedrooms with built-in robes, one with an ensuite
- ? Stylish fully tiled bathrooms, one with a desirable bathtub

Sold \$1,785,000
Council Rates: \$352/qtr (approx)
Strata Rates: \$2,114/qtr (approx)
Contact: William Kwok
 0285888888
 0481 702 370
 William Kwok
 0285888888
 0481 702 370
Type: Apartment
Sold Date: 17/11/2022
<https://www.resbymirvac.com>



LEVEL TWENTY EIGHT



PLANS SHOWN ONLY INDICATIVE OF LAYOUT. DIMENSIONS ARE APPROXIMATE.
 Plans shown are only indicative of layout. Dimensions are approximate.
 Ref. No. 15189

INTERNAL	:	83m ²
BALCONY	:	6m ²
CAR SPACE	:	15m ²
STORAGE	:	2m ²



RES real estate services
 by mirvac

St Leonards, NSW
 2805/486 Pacific Highway