



St Leonards, NSW

2403/486 Pacific Highway

2 BED **2** BATH **1** CAR **RES**

Mirvac Luxury lifestyle on with harbour and city views

Perched on the 24th floor of The Jackson building, this sumptuous sky-home offers westerly views of the Parramatta River and beyond. This sumptuous sky-home promises an executive lifestyle central to St Leonards train station and the heart of vibrant Crows Nest. Stay in and enjoy sleek open plan in/outdoor entertaining or step out to the building's gorgeous shared indoor lap pool, gym, spa, sauna, function rooms and terrace.

- ? Floor-to-ceiling glass windows with dazzling day/night views
- ? Open plan kitchen, living/dining flow to covered balcony
- ? Stone bench tops and gas stainless steel Miele appliances
- ? Generous bedrooms with built-in robes, one with an ensuite
- ? Stylish fully tiled bathrooms, one with a desirable bathtub

Sold \$1,680,000

Council Rates: \$353/qtr (approx)

Strata Rates: \$2,019/qtr (approx)

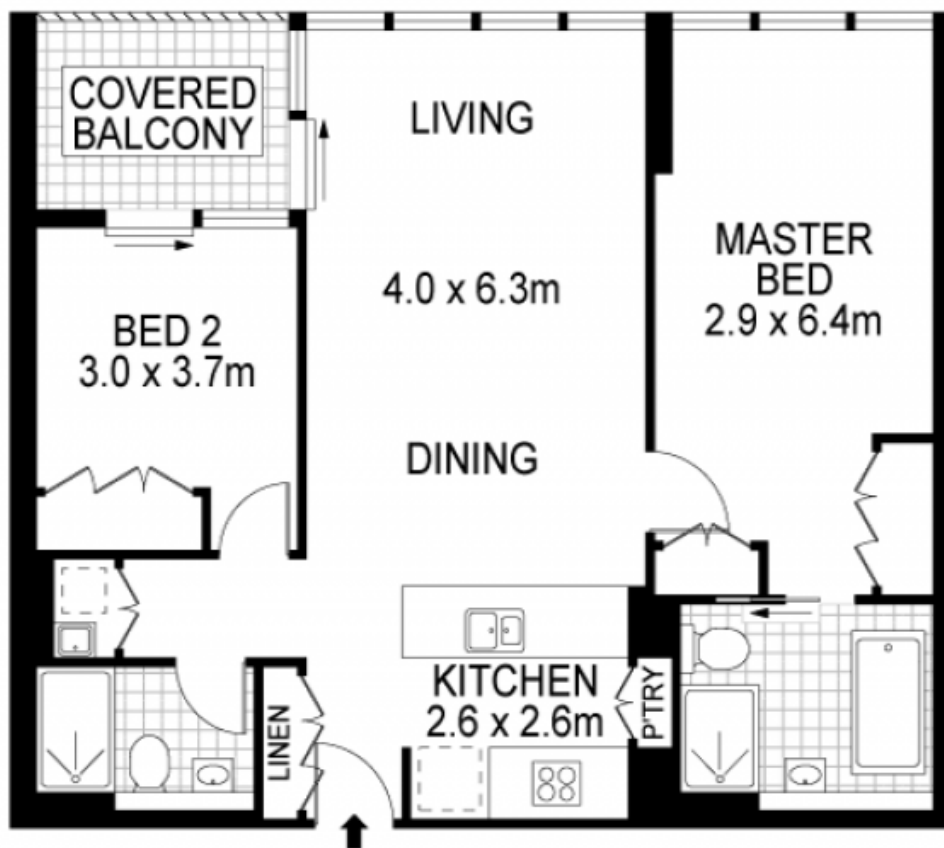
Contact: William Kwok
0285888888
0481 702 370
William Kwok
0285888888
0481 702 370

Type: Apartment

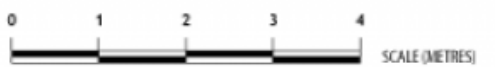
Sold Date: 24/03/2023

Land: 89Square Metres

<https://www.resbymirvac.com>



LEVEL TWENTY FOUR



PLANS SHOWN ONLY INDICATIVE OF LAYOUT. DIMENSIONS ARE APPROXIMATE.
Plans shown are only indicative of layout. Dimensions are approximate.
Ref. No. 15188

INTERNAL : 83m²
BALCONY : 6m²
CAR SPACE : 12m²
STORAGE : 2m²



RES real estate services
by mirvac

St Leonards, NSW
2403/486 Pacific Highway