



DONCASTER, VIC

G02/65 Stables Circuit

2
BED

2
BATH

2
CAR



Tranquil ground level apartment with STUDY

Where style, privacy and timeless design blends with nature, beauty and freedom. Tullamore is an exclusive and highly sought lifestyle.

Apartment features:

- ? Bespoke design, quality construction and finishes
- ? Large internal space of 88m²
- ? Balcony ? 53m² ? overlooking park
- ? Storage cage near car spaces
- ? X2 car spaces
- ? Ducted heating & refrigerated cooling throughout
- ? Timber flooring to kitchen and living areas
- ? Twin shower upgrade

HUGE courtyard- \$575pw

Contact: Aleiasha Clark
03 9645 1199
0491 174 507

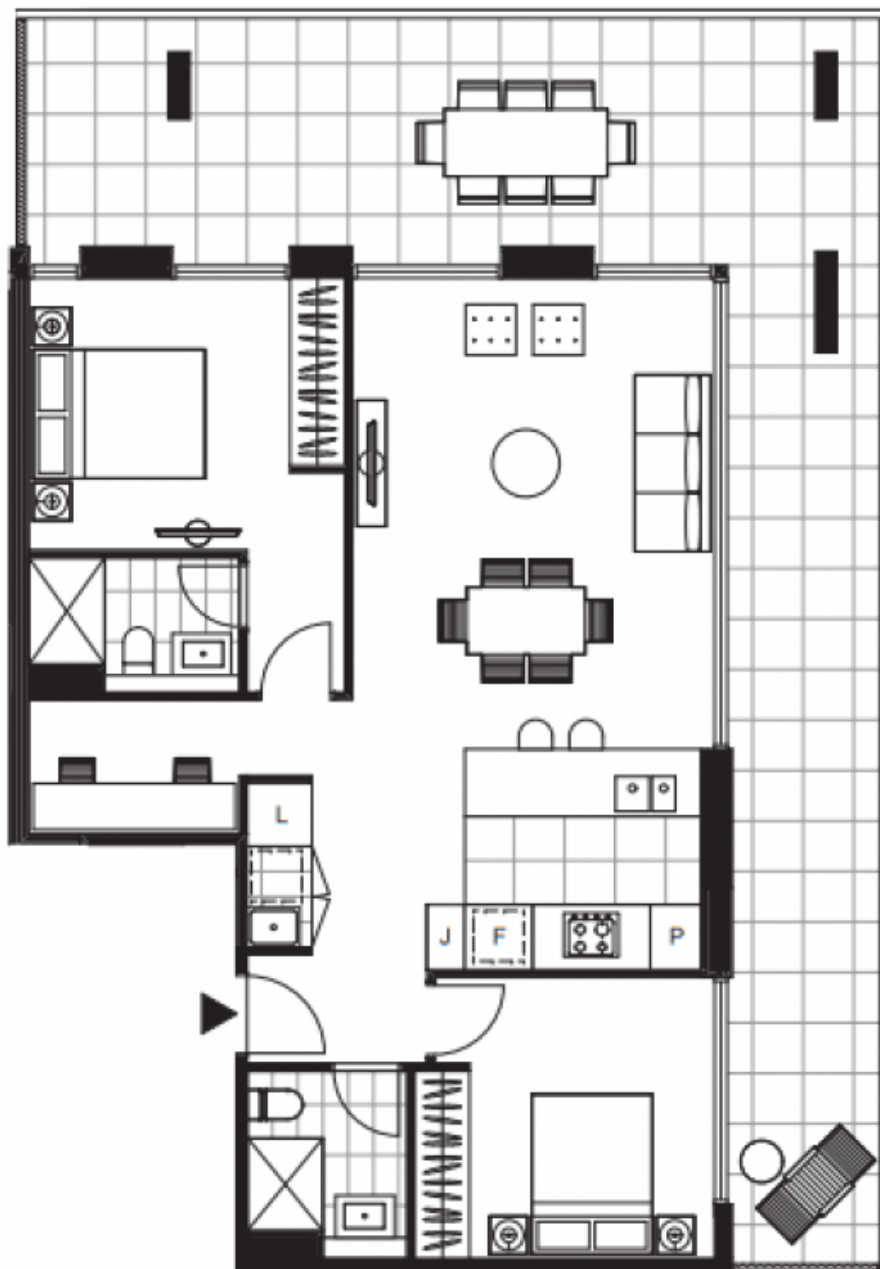
Type: Apartment

Date Available: 10/05/2022

Leased Date: 23/05/2022

Bond: \$2498

<https://www.resbymirvac.com>



GROUND FLOOR

APT G.02

LOCATION PLAN



APARTMENT TYPE
2 BED, 2 BATH + STUDY

INTERNAL AREA 88 m²
BALCONY AREA 53 m²

Plans shown are only indicative of layout. Dimensions are approximate.

DONCASTER, VIC
G02/65 Stables Circuit

DONCASTER ROAD

excludes parking and external storage areas.

