



**St Leonards, NSW**  
1203/472 Pacific Highway

<b>3</b> BED	<b>2</b> BATH	<b>2</b> CAR	<b>RES</b>
-----------------	------------------	-----------------	------------

**Mirvac luxury lifestyle with city view St Leonards**

With uninterrupted views to the Harbour Bridge, this apartment offers a decadent lifestyle. It showcase clean lines, sumptuous finishes and an open plan in/outdoor design. Stay in and enjoy a dazzling day/night view as you entertain or step out to resort-style facilities for residents and rapid access to shops, cafes and rail.

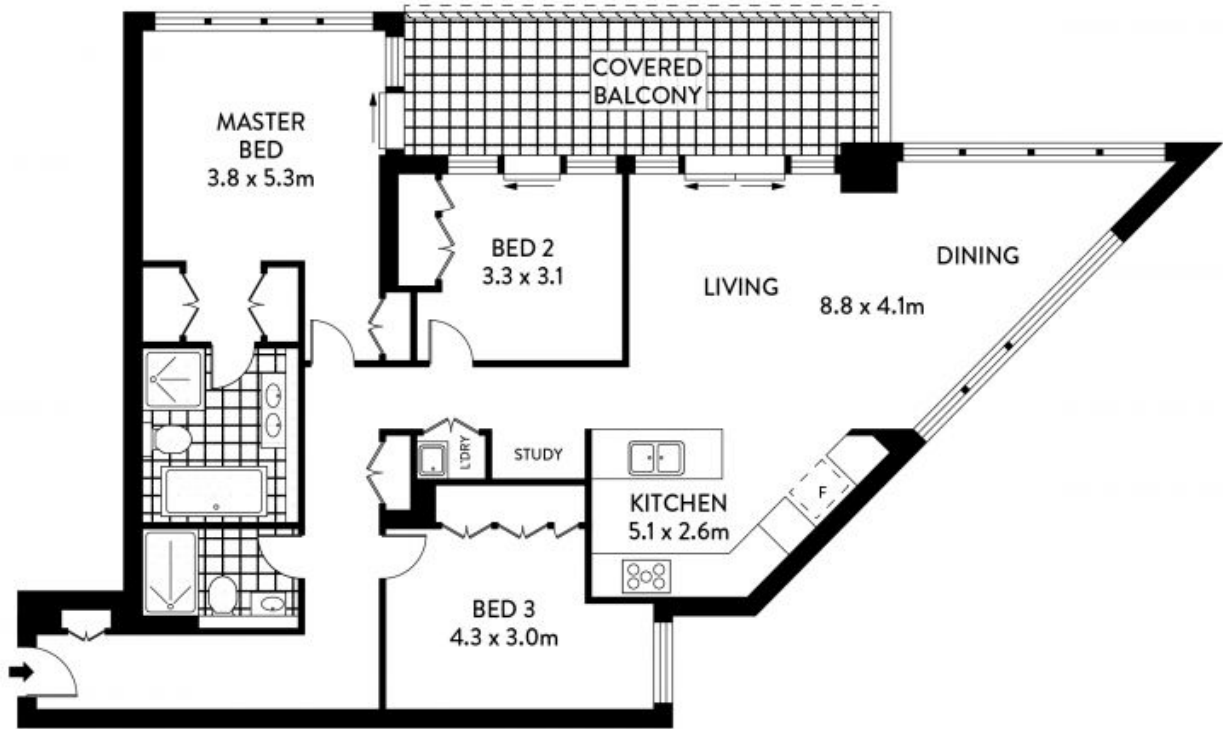
- ? Functional layout, long entrance hall, floor-to-ceiling glass
- ? Open plan kitchen and spacious living/dining flowing out
- ? Stone bench tops, gas Miele appliances plus dishwasher
- ? Balcony with Harbour Bridge views ideal for alfresco dining
- ? Bedrooms with built-ins, fully tiled bathrooms plus laundry
- ? Ducted air conditioning, secure parking with lift access
- ? Share pool, spa, sauna, steam room and outdoor space

**Under Offer**

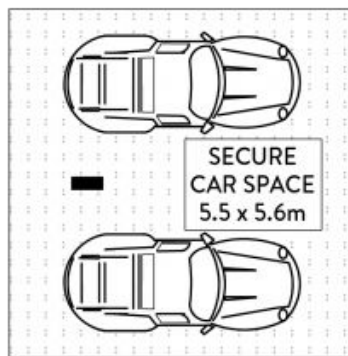
**Council Rates:** \$352/qtr (approx)  
**Strata Rates:** \$2,785/qtr (approx)  
**Contact:** William Kwok  
 0285888888  
 0481 702 370

**Type:** Apartment

<https://www.resbymirvac.com>



LEVEL TWELVE



PLANS SHOWN ONLY INDICATIVE OF LAYOUT. DIMENSIONS ARE APPROXIMATE.  
Floor plans by www.remaustralia.com  
Ref. No: 15181

INTERNAL	:	116m <sup>2</sup>
BALCONY	:	17m <sup>2</sup>
CAR SPACE	:	31m <sup>2</sup>
STORAGE	:	2m <sup>2</sup>



Plans shown are only indicative of layout. Dimensions are approximate.

1203/472 PACIFIC HIGHWAY  
**St Leonards, NSW**  
1203/472 Pacific Highway

ST LEONARDS