



**DOCKLANDS, VIC**  
1207/1 Point Park Crescent

**2** BED **1** BATH **1** CAR



**Breathtaking corner living with stylish character**  
Make the most of the wonderful corner position in the Yarra Point building with this contemporary 2Bedroom apartment featuring;

Open plan living/ dining with island bench

Marina and Port Phillip Bay views

Stainless steel Miele kitchen appliances

Secure parking x1

Central main bathroom

European laundry

**Panoramic Vistas- \$575pw**

**Contact:** Aleiasha Clark  
03 9645 1199  
0491 174 507

**Type:** Apartment

**Date Available:** 20/05/2022

**Leased Date:** 20/05/2022

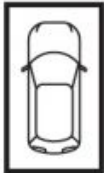
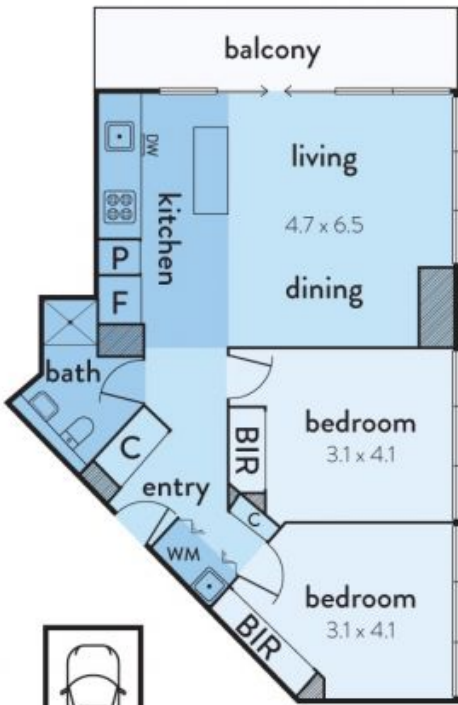
**Bond:** \$2499

<https://www.resbymirvac.com>

# 1207/1 POINT PARK CRESCENT, DOCKLANDS



This floorplan is an artist's impression only, it contains information that we believe to be reliable however we cannot guarantee and accept no responsibility for the accuracy of information supplied. All dimensions are indicative and listed in metres. Interested parties should take their own measurements or engage the services of a licensed surveyor.



carspace  
(not in position)



Plans shown are only indicative of layout. Dimensions are approximate.