



DOCKLANDS, VIC
1207/1 Point Park Crescent

2 BED **1** BATH **1** CAR

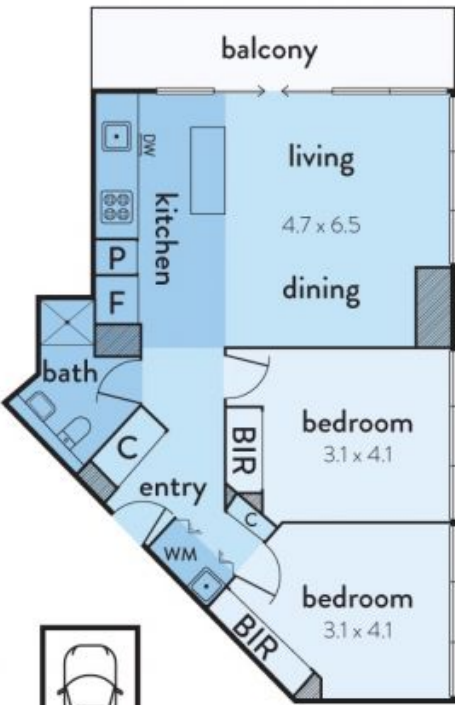


Breathtaking corner living with stylish character
Make the most of the wonderful corner position in the Yarra Point building with this contemporary 2Bedroom apartment featuring;

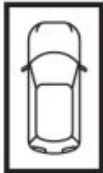
- Open plan living/ dining with island bench
- Marina and Port Phillip Bay views
- Stainless steel Miele kitchen appliances
- Secure parking x1
- Central main bathroom
- European laundry

Panoramic Vistas- \$575pw
Contact: Aleiasha Clark
 03 9645 1199
 0491 174 507
Type: Apartment
Date Available: 20/05/2022
Leased Date: 20/05/2022
Bond: \$2499
<https://www.resbymirvac.com>

1207/1 POINT PARK CRESCENT, DOCKLANDS



This floorplan is an artist's impression only, it contains information that we believe to be reliable however we cannot guarantee and accept no responsibility for the accuracy of information supplied. All dimensions are indicative and listed in metres. Interested parties should take their own measurements or engage the services of a licensed surveyor.



carspace
(not in position)



Plans shown are only indicative of layout. Dimensions are approximate.