



Glebe, NSW

1605/1 Scotsman Street

2
BED

2
BATH

1
CAR



Under Offer | Inspection Cancelled

Boasting a spectacular terrace that runs the full length of the layout, this top floor apartment is the pinnacle of alfresco entertaining bliss. With a gourmet kitchen for cooking up a feast for your guests, it enjoys a wonderful sense of space, light and contemporary refinement. An easy walk to the Tramsheds, eateries and light rail, it's ideal for social butterflies.

- ? Gourmet open plan kitchen and expansive living/dining
- ? Kitchen with stone island breakfast bar, Miele appliances
- ? The ultimate terrace for throwing the best summer BBQs
- ? Bedrooms with built-in or walk-in robes, terrace access
- ? Fully tiled designer bathrooms, bathtub, internal laundry
- ? Ducted air conditioning, security entrance, lift access

\$1,767,000

Council Rates: \$286/qtr (approx)

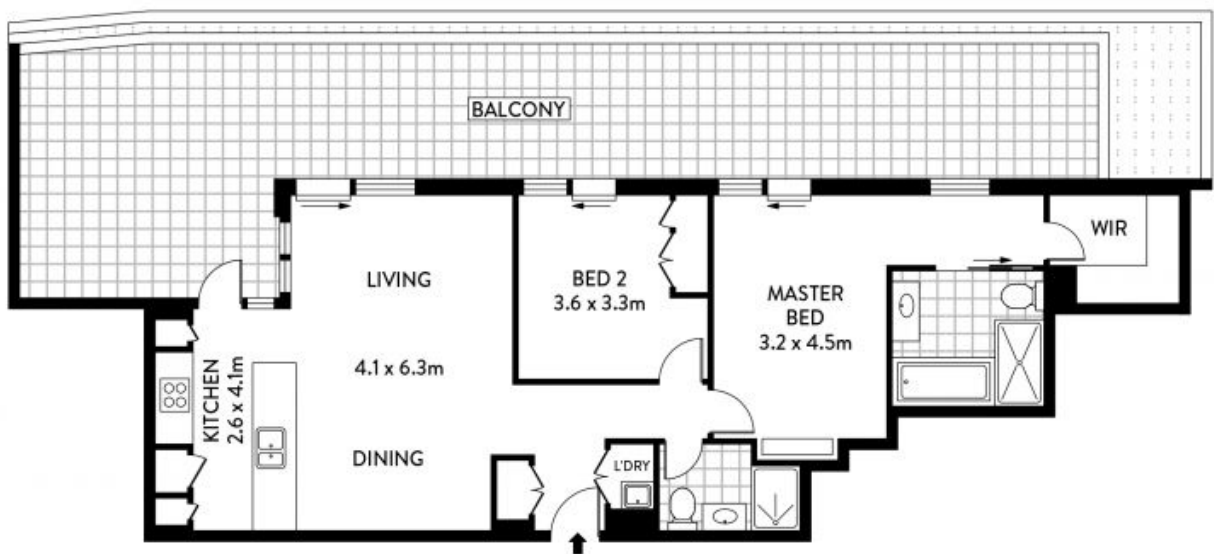
Strata Rates: \$1,536/qtr (approx)

Contact: Matthew Matthews
02 8588 8888
0418 266 590
William Kwok
0285888888
0481 702 370

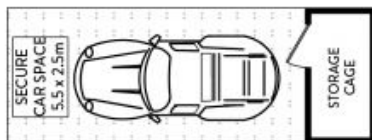
Type: Apartment

Sold Date: 05/04/2022

<https://www.resbymirvac.com>



LEVEL SIX



PLANS SHOWN ONLY INDICATIVE OF LAYOUT. DIMENSIONS ARE APPROXIMATE.
Floor plans by www.remaustralia.com
Ref. No: 15116

INTERNAL : 92.11m²
BALCONY : 60.00m²
STOAREG CAGE : 02.53m²
CAR SPACE : 13.75m²

NOTE :- STORAGE CAGE



real estate
services
by mirvac

Plans shown are only indicative of layout. Dimensions are approximate.

1605/1 SCOTSMAN STREET

FOREST LODGE

Glebe, NSW
1605/1 Scotsman Street