



**Glebe, NSW**  
416/19 Minogue Crescent

**3** BED **2** BATH **2** CAR

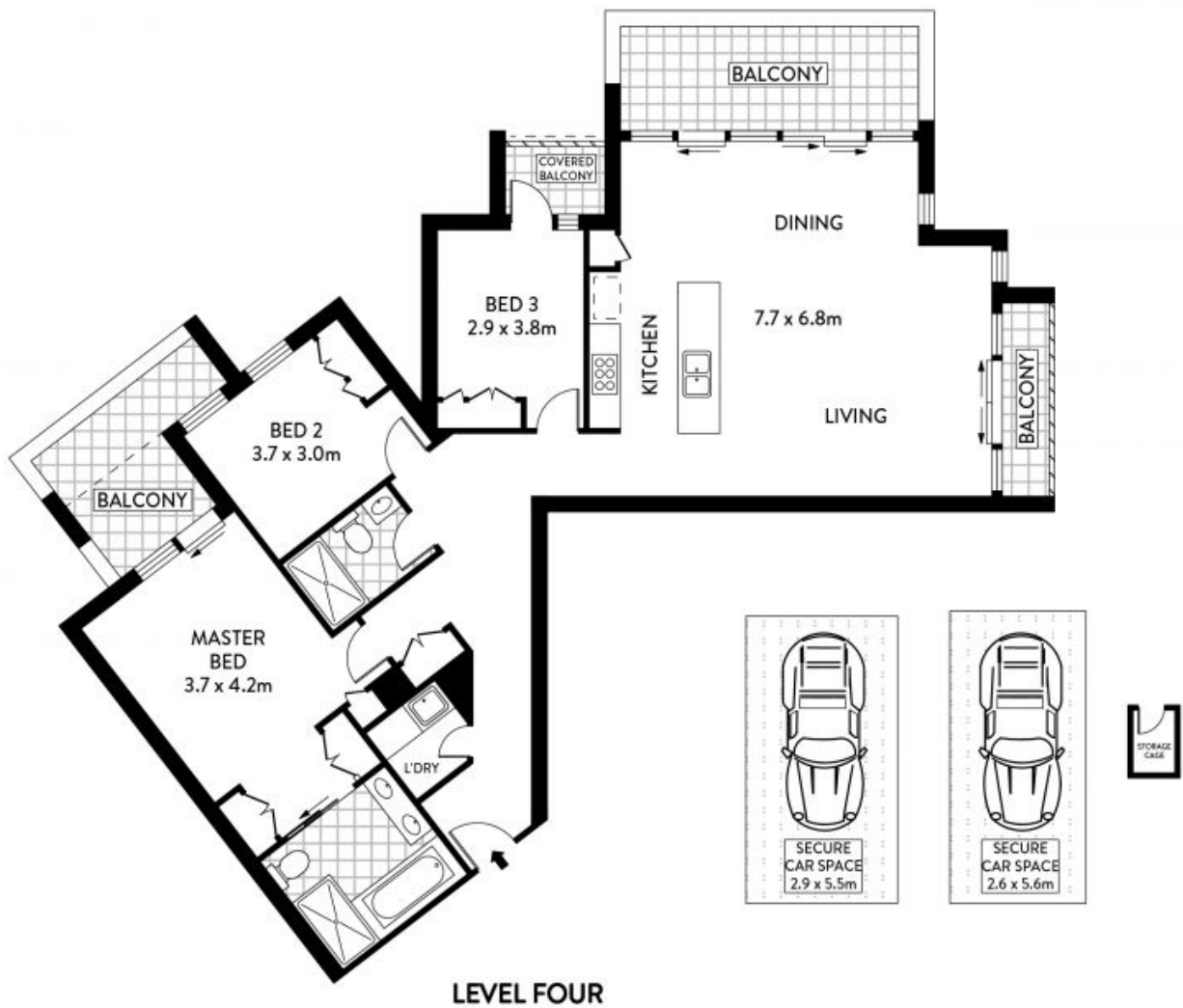


**153sqm of divine Mirvac-built living in Harold Park building**

Boasting an expansive 153sqm floor plan with multiple balconies and lovely leafy outlooks, this apartment is the epitome of contemporary elegance. Natural light pours into the utterly impeccable interiors with clean lines, creamy tones and sumptuous appointments. Stay in and enjoy in/outdoor entertaining or step out to parks, walking tracks, Tramsheds, cafes and rail.

- ? Vast living/dining room flows to two separate balconies
- ? Gas kitchen, stone breakfast bar and Miele appliances
- ? Generous bedrooms with built-ins and outdoor access
- ? Deluxe fully tiled bathrooms, bathtub, internal laundry
- ? Ducted air conditioning, security entrance, lift, 4th floor

**Sold \$1,950,000**  
**Council Rates:** \$286/qtr (approx)  
**Strata Rates:** \$2,312/qtr (approx)  
**Contact:** William Kwok  
 0285888888  
 0481 702 370  
 William Kwok  
 0285888888  
 0481 702 370  
**Type:** Apartment  
**Sold Date:** 23/09/2022  
<https://www.resbymirvac.com>



0 1 2 3 5  
 SCALE (METRES)  
 PLANS SHOWN ONLY INDICATIVE OF LAYOUT. DIMENSIONS ARE APPROXIMATE.  
 Floor plans by www.remaustralia.com  
 Ref. No: 15115

INTERNAL : 126.33m<sup>2</sup>  
 BALCONY : 25.47m<sup>2</sup>  
 STOAREG CAGE : 0.96m<sup>2</sup>  
 CAR SPACE : 30.51m<sup>2</sup>

NOTE :- STORAGE CAGE



Plans shown are only indicative of layout. Dimensions are approximate.

**416/19 MINOGUE CRESCENT**  
**Glebe, NSW**  
 416/19 Minogue Crescent

**FOREST LODGE**