



Glebe, NSW

7508/2 Cullen Close

2 BED **2** BATH **1** CAR 

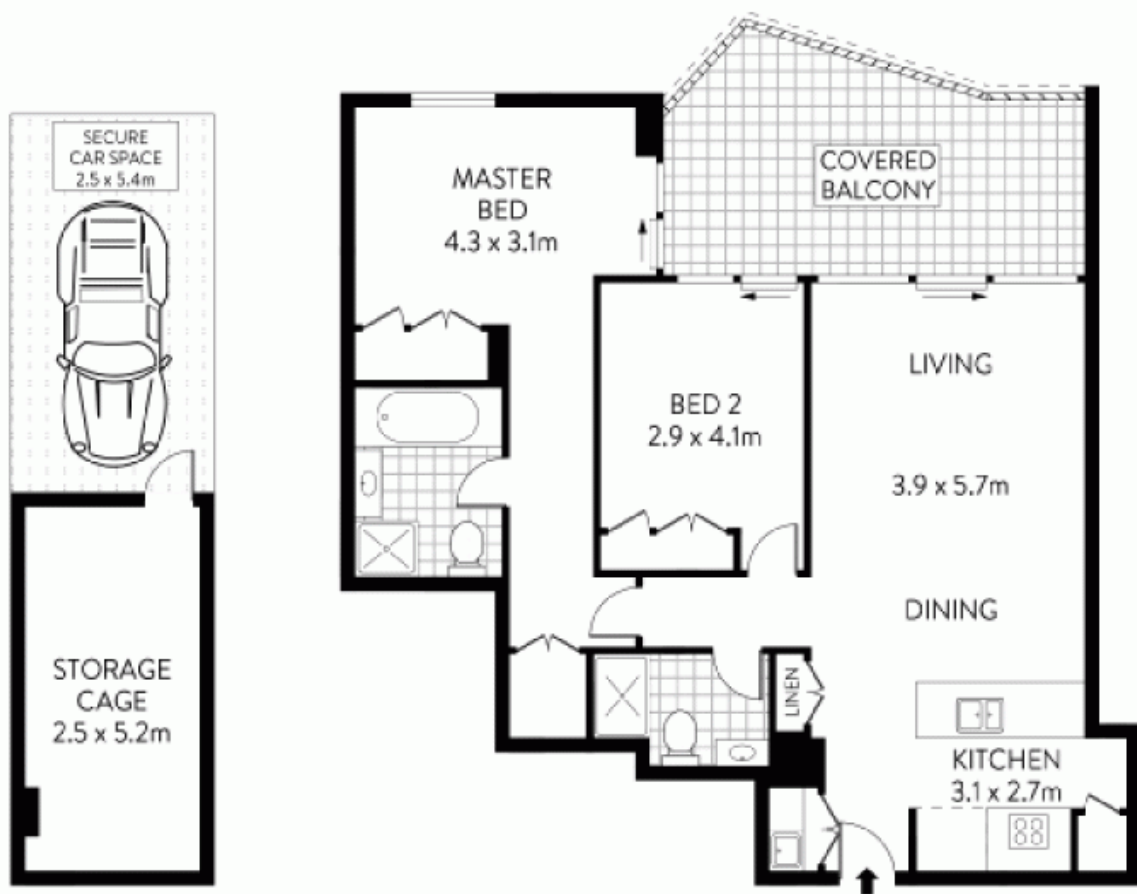
Active and social lifestyle living in chic 'Harold Park' complex

With clean lines, sumptuous appointments, and generous light-filled interiors, this apartment offers a chic modern living in the popular Harold Park development. It embraces open-plan indoor/outdoor entertaining while enjoying pleasant residential outlooks. Promoting an active and social lifestyle, it enjoys walking tracks, bike paths, and foreshore reserves at its door.

- ? Spacious living/dining room flows to a covered terrace
- ? Kitchen with stone benchtops and a lovely breakfast bar
- ? Gas stainless steel Miele appliances including a dishwasher
- ? Generous bedrooms with built-in robes, main with ensuite
- ? Stylish bathrooms, internal laundry room, air conditioning

SOLD

Council Rates: \$286/qtr (approx)
Strata Rates: \$1,536/qtr (approx)
Contact: Matthew Matthews
 02 8588 8888
 0418 266 590
Type: Apartment
Sold Date: 06/04/2022
<https://www.resbymirvac.com>



LEVEL FIVE



PLANS SHOWN ONLY INDICATIVE OF LAYOUT. DIMENSIONS ARE APPROXIMATE.
Floor plans by www.realestate.com.au
Ref: 104 020

- INTERNAL BALCONY : 83m²
- BALCONY : 17m²
- CAR SPACE : 16m²
- STORAGE : 13m²



7508/2 CULLEN CLOSE

FOREST LODGE

Plans shown are only indicative of layout. Dimensions are approximate.

Glebe, NSW
7508/2 Cullen Close