



AINTREE, VIC

19 Ellson Street

3
BED

2
BATH

2
CAR



Calling Astute Investors and first home buyers!

Quality Mirvac built home located in the renowned Woodlea community is in a near new condition, contemporary design and open spaces are the best choice for both investors and first home buyers!

Melding the best of contemporary design and open spaces, this modern home comprises three full sized bedrooms, all with built in robes and the master includes WIR and dedicated ensuite.

On the ground floor the central entrance hallway leads from your porch past two bedrooms, central bathroom with a bath tub and a laundry room. First floor features a master bedroom with WIR & en-suite, plus an oversized balcony, they are separated by the huge open plan living & meals area ? complimented by the full chef's kitchen with European appliances.

Further features include ducted heating and cooling throughout plus double garage and backyard outdoor area.

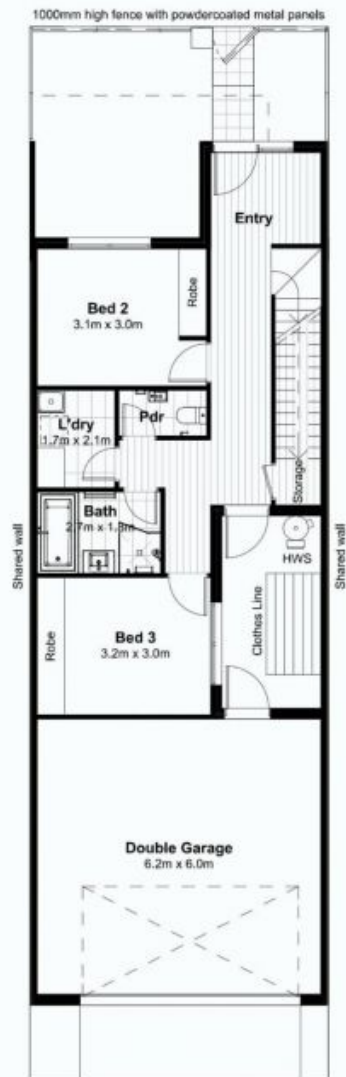
\$510,000-\$530,000

Contact: Andrew Chen

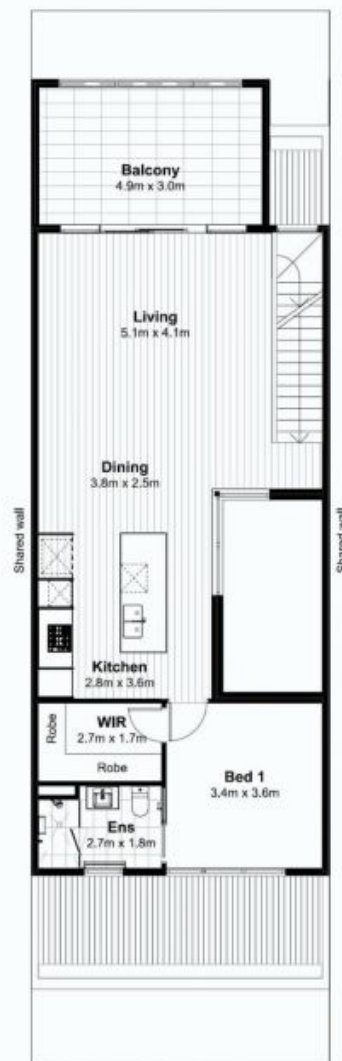
Type: 0490 806861

Sold Date: 08/04/2022

<https://www.resbymirvac.com>



Ground Floor
1:100



First Floor
1:100

Plans shown are only indicative of layout. Dimensions are approximate.

AINTREE, VIC
19 Ellson Street