



DOCKLANDS, VIC

2402/80 Lorimer Street

2
BED

2
BATH

2
CAR



Wake up to the most spectacular views imaginable!

Style, sophistication, and space are the eye-catching hallmarks of this stunning 2 bedroom, 2 bathroom Yarra's Edge apartment! With renovated additions and set on the 24th floor of Tower 4, you'll love living in this private waterfront pocket close to the best of the Docklands and the CBD.

- ? Beautiful floors and large floor-to-ceiling windows dominate so much of this generous apartment
- ? Make the most of the north-east orientation which allows for marvellous city and river vistas
- ? Appreciate the sensational natural light through the generous living zone, which has space for lounge, dining, and casual meals just off the kitchen
- ? Smart and considered stone kitchen has undergone updates and includes push soft-close drawers, appliance cupboard, induction cooktop, and dual integrated Fisher & Paykel dishdrawers

Contact agent

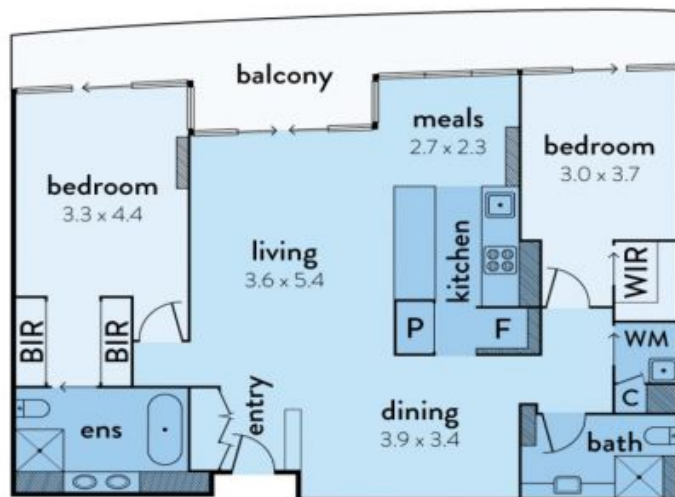
Contact: Andrew Chen

Type: Apartment

Sold Date: 19/04/2022

<https://www.resbymirvac.com>

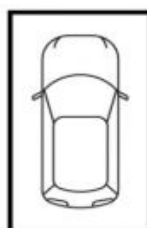
2402/80 LORIMER STREET, DOCKLANDS



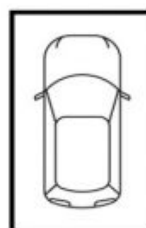
This floorplan is an artist's impression only, it contains information that we believe to be reliable however we cannot guarantee and accept no responsibility for the accuracy of information supplied. All dimensions are indicative and listed in metres. Interested parties should take their own measurements or engage the services of a licensed surveyor.



**real estate
services**
by mirvac



carspace
(not in position)



carspace
(not in position)



Plans shown are only indicative of layout. Dimensions are approximate.

DOCKLANDS, VIC
2402/80 Lorimer Street