



Glebe, NSW

510/1 Cullen Close

1
BED

1
BATH



Spacious & Bright 1 Bedroom Apartment in Harold Park, Glebe

Welcome to Harold Park, Glebe's Secret Backyard.

Here in Harold Park you will find yourself in an idyllic parkside location, with only a short walk to Glebe Foreshore. Just meters away, The Tramsheds retail precinct resides featuring cafes, a grocery store, restaurants and a medical centre.

This 67sqm, 5th floor apartment features:

- Generous bedroom with built-in wardrobes
- Open-plan living and dining area, flowing onto balcony
- Contemporary kitchen with stone island benchtop and built-in Miele appliances

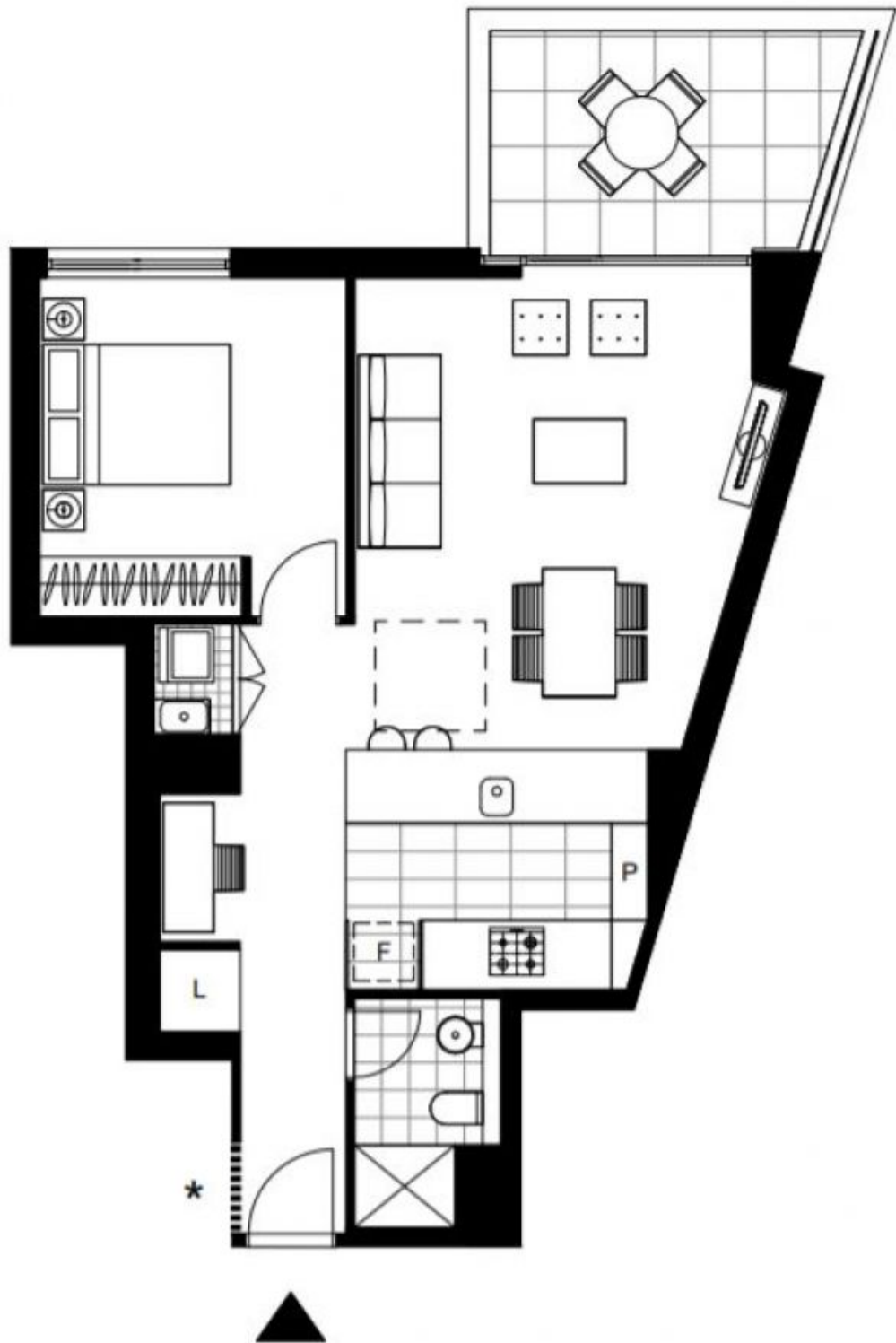
\$595 per week

Contact: Naz Sabzpour
02 8588 8888
0401 545 440

Type: Apartment

Date Available: 12/03/2022

<https://www.resbymirvac.com>



Plans shown are only indicative of layout. Dimensions are approximate.

Glebe, NSW
510/1 Cullen Close