



DOCKLANDS, VIC
1108/60 Lorimer Street

1 BED **1** BATH **1** CAR



Over sized 1Bed apartment with Bay Views!

*Unfurnished

Just listed is this magnificent 1 bedroom apartment located in the prestigious Yarra’s Edge Complex.

Comprising a generous sized living and dining room with floorboards & gourmet kitchen with large stainless steel fridge, stone benches & modern appliances, spacious bedroom with bay views, built-in robes and a stylish central bathroom with washing machine.

Other features include a fabulous balcony with panoramic views across Port Philip Bay, double glazed windows; secure car space and resident access to the fabulous Rek Dek facilities including heated indoor lap pool, spa, sauna, steam-room and gymnasium.

\$510pw - LEASED

Contact: Baden Lucas
03 9645 1199
0418 888 751
Aleisha Clark
03 9645 1199
0491 174 507

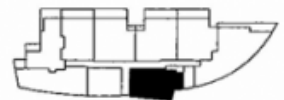
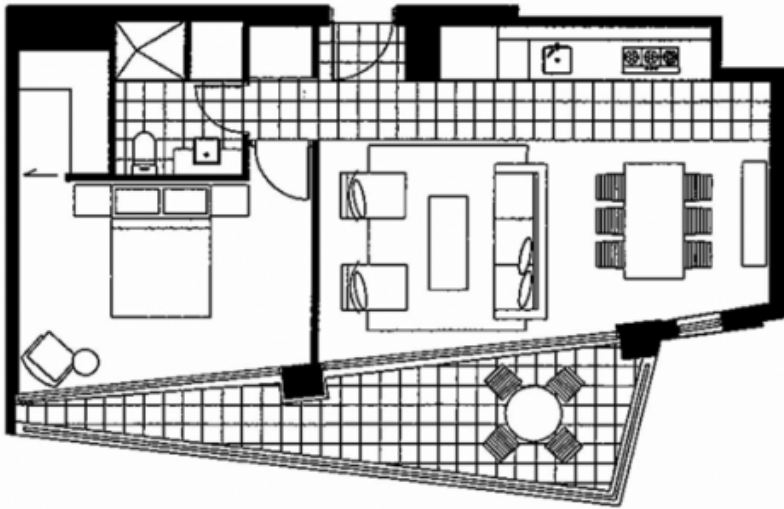
Type: Apartment
Date Available: 18/03/2022
Leased Date: 08/03/2022
Bond: \$2216
<https://www.resbymirvac.com>

Living
Dining

4.0 x 4.1
2.9 x 3.7

Bedroom 1 3.0 x 4.5 Plus Robe

Please note that this floor plan is a guide only.
The information contained herein is not guaranteed.
Dimensions are approximate. Prospect purchasers
must rely on their own enquiries.



Plans shown are only indicative of layout. Dimensions are approximate.

DOCKLANDS, VIC
1108/60 Lorimer Street