



## Zetland, NSW

1005/18 Ebsworth Street

**1**  
BED

**1**  
BATH



### Sophisticated lifestyle near Green Square shops, rail and cafes

A city-fringe lifestyle address that promotes and active social life, this sleek and sophisticated apartment is the perfect base from which to enjoy one of Sydney's most vibrant new communities. It showcases a sumptuous open plan design with generous proportions and light-filled interiors. Step out and stroll to cosmopolitan attractions, as well as shops, supermarkets and rail.

Elevated far-reaching urban outlooks that light up at night

- ? Elevated far-reaching urban outlooks that light up at night
- ? Open plan kitchen and wonderfully spacious living/dining
- ? Kitchen with stone bench tops and a lovely breakfast bar

### Sold | \$681,000

**Council Rates:** \$276/qtr (approx)

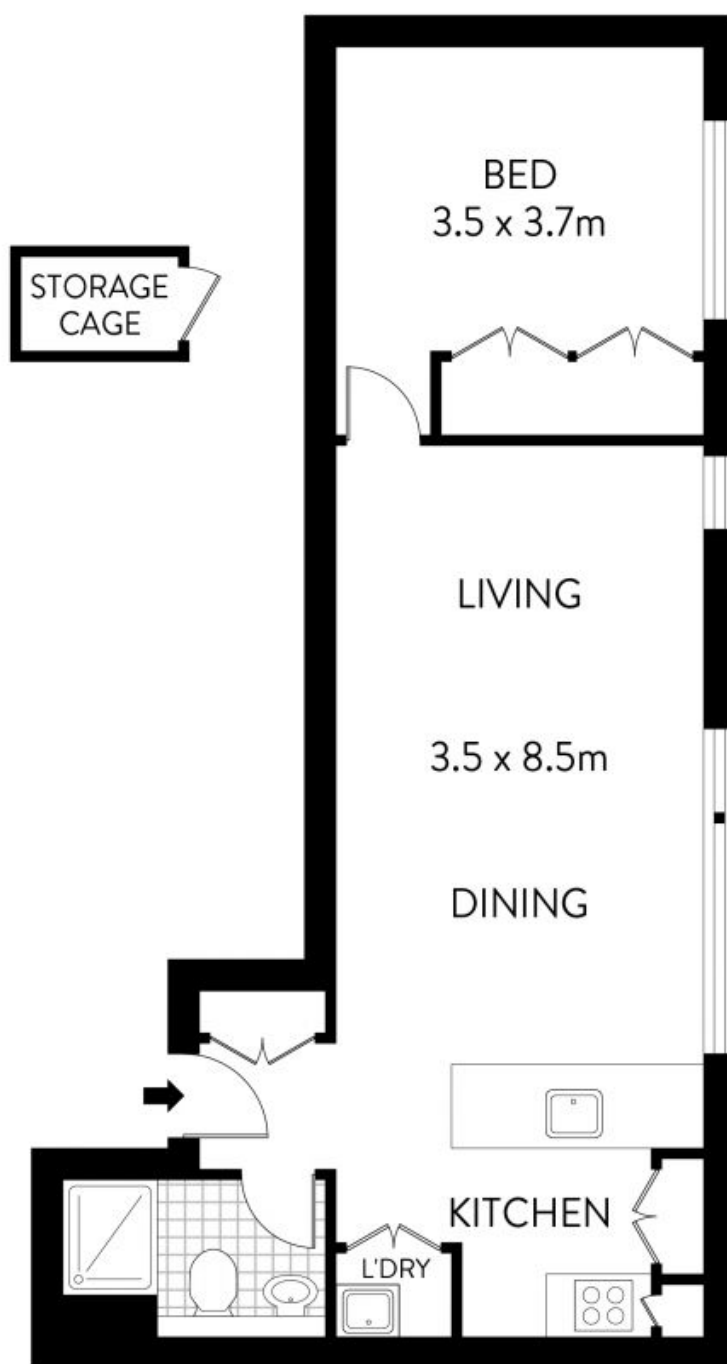
**Strata Rates:** \$927/qtr (approx)

**Contact:** Matthew Matthews  
02 8588 8888  
0418 266 590

**Type:** Apartment

**Sold Date:** 02/05/2022

<https://www.resbymirvac.com>



## LEVEL TEN



PLANS SHOWN ONLY INDICATIVE OF LAYOUT. DIMENSIONS ARE APPROXIMATE.  
Floor plans by [www.remaustralia.com](http://www.remaustralia.com)  
Ref. No: 15042

INTERNAL : 49m<sup>2</sup>



**real estate  
services**  
by mirvac



Plans shown are only indicative of layout. Dimensions are approximate.

1005/18 EBSWORTH STREET

ZETLAND

**Zetland, NSW**  
1005/18 Ebsworth Street