

## Glebe, NSW

13/1A The Crescent

**3** BED **2** BATH **2** CAR 

### Stylish 3-Bedroom Apartment in Mirvac's 'Harold Park' Precinct

This ground-level access property offers;

- Three large bedrooms, all with built-in wardrobes
- Two bathrooms, with bath in ensuite
- Modern stone kitchen with integrated Miele appliances and island bench
- Spacious living & dining area, flowing onto courtyard with private street access
- Ducted A/C, video intercom and NBN connectivity
- Internal laundry with washer and dryer included
- Two allocated carspaces located in basement
- Secure basement storage cage included
- 250m to buses, the light rail and the Tramsheds

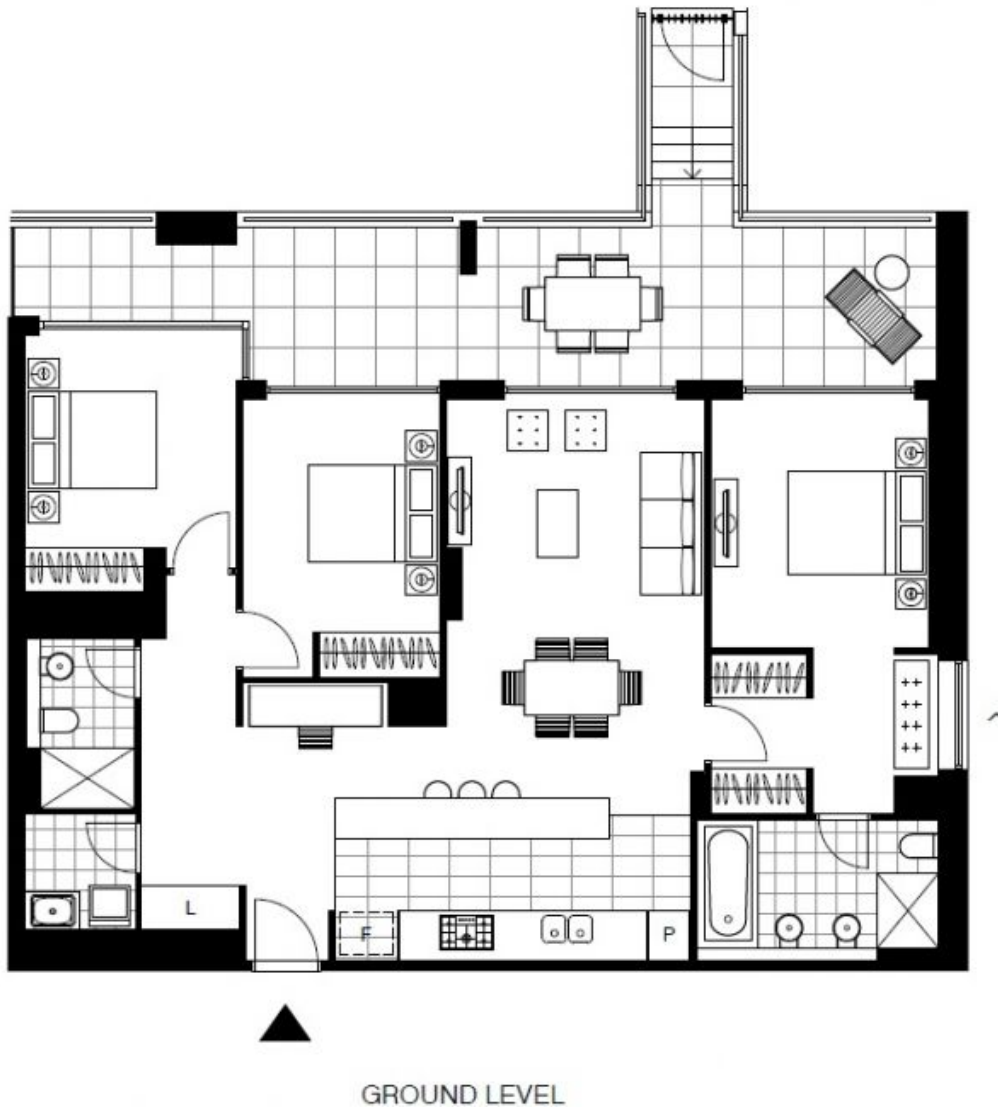
**\$1250 per week**

**Contact:** Naz Sabzpouri  
02 8588 8888  
0401 545 440

**Type:** Apartment

**Date Available:** 07/03/2022

**<https://www.resbymirvac.com>**



Plans shown are only indicative of layout. Dimensions are approximate.

**Glebe, NSW**  
13/1A The Crescent