



## EAST MELBOURNE, VIC

506/280 Albert Street

**2** BED **2** BATH **1** CAR



### Stylish 2-bedroom Eastbourne apartment

Quality is paramount in this superb two bedroom apartment boasting a prestigious location in The Eastbourne - East Melbourne's finest apartment complex positioned opposite Fitzroy Gardens just a heartbeat from the City.

The stylish interior includes a generous living area with prestige Miele appliances and integrated fridge/freezer opening to a balcony with garden and city views, two sparkling bathrooms and concealed laundry; plus one basement car space & storage locker.

Apartment features:

- ? Bespoke design, quality construction and finishes
- ? Spectacular views of Fitzroy Gardens

**\*\*UNDEROFFER\*\***

**Contact:** Aleiasha Clark  
03 9645 1199  
0491 174 507

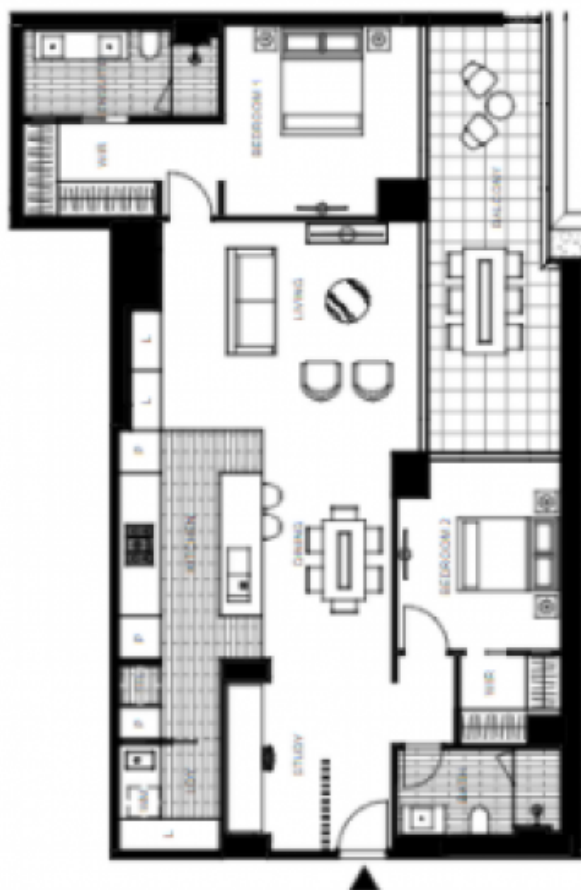
**Type:** Apartment

**Date Available:** 25/02/2022

**Leased Date:** 28/02/2022

**Bond:** \$4345

<https://www.resbymirvac.com>



## 506/280 Albert St, East Melbourne

2 Bed | 2 Bath | 1 Car

### Level 5

- Views of Fitzroy Gardens
- Island bench
- Total area:140M2
- Study nook

For more information, please contact:

Aleisha Clark  
0491 174 507  
[aleisha.clark@realestate.com.au](mailto:aleisha.clark@realestate.com.au)



Plans shown are only indicative of layout. Dimensions are approximate.

**EAST MELBOURNE, VIC**  
506/280 Albert Street