



## Glebe, NSW

503/22 Scotsman Street

2  
BED

2  
BATH

1  
CAR



### Northeast-facing apartment with space, style and convenience

Basking in the natural light and warmth of its prized northeast aspect, this apartment is sleek, stylish and positioned for a cosmopolitan lifestyle. It has been designed with an emphasis on open plan in/outdoor entertaining and is appointed with luxe finishes and inclusions. Step out to parks and walking tracks and stroll to the charming Tramsheds and vibrant Glebe attractions.

- ? Loggia-style alfresco entertaining terrace, northeast aspect
- ? Open plan kitchen and wonderfully roomy living/dining area
- ? Stone bench tops, gas cooking, stainless steel appliances
- ? Generous bedrooms with built-in robes, one with an ensuite
- ? Stylish fully tiled bathrooms, one with a desirable bathtub

### contact agent

**Council Rates:** \$286/qtr (approx)

**Strata Rates:** \$1,326/qtr (approx)

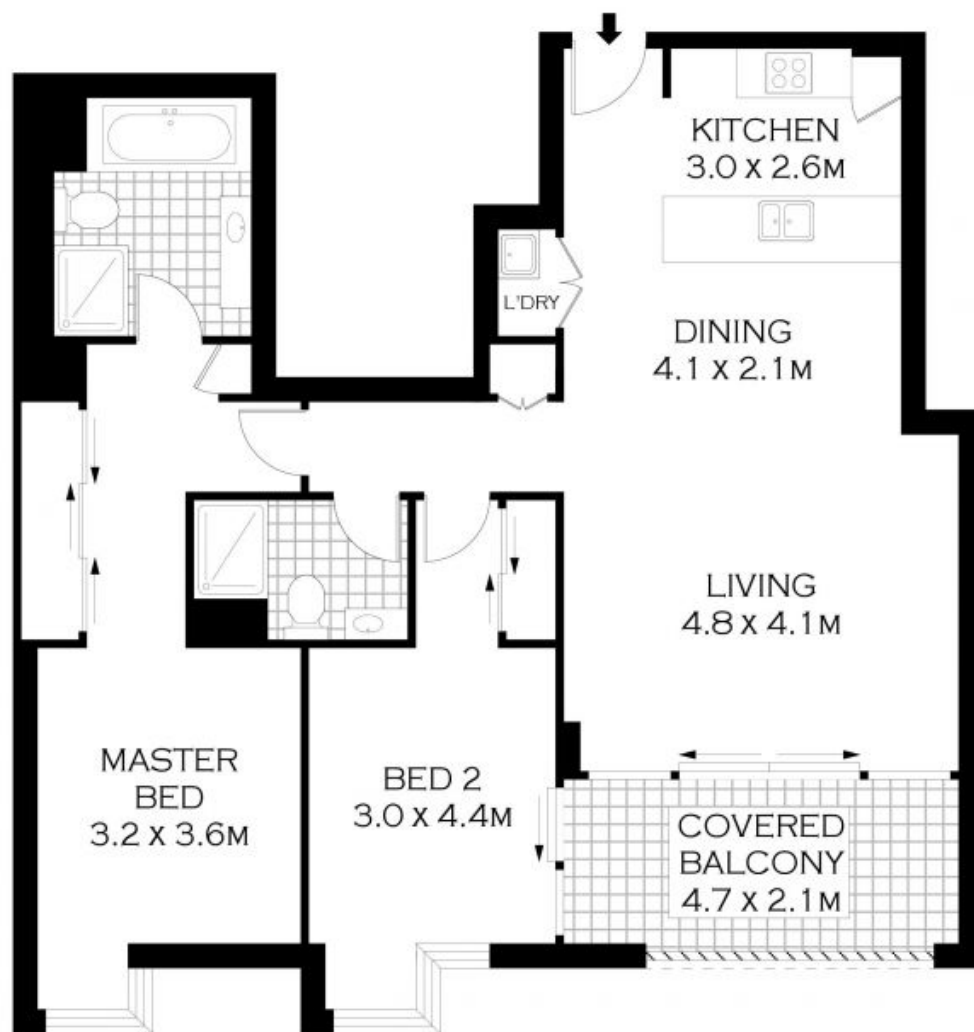
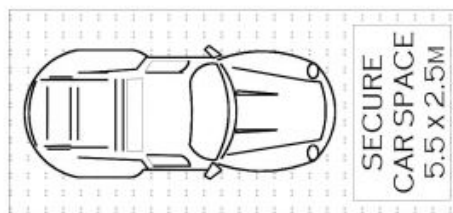
**Contact:** Matthew Matthews  
02 8588 8888  
0418 266 590

**Type:** Apartment

**Sold Date:** 12/04/2022

**Land:** 99Square Metres

<https://www.resbymirvac.com>



LEVEL FIVE



PLANS SHOWN ONLY INDICATIVE OF LAYOUT. DIMENSIONS ARE APPROXIMATE.  
Floor plans by [www.remaustralia.com](http://www.remaustralia.com)  
Ref. No: 15013



Plans shown are only indicative of layout. Dimensions are approximate.

503/22 SCOTSMAN STREET

FOREST LODGE

**Glebe, NSW**  
503/22 Scotsman Street