



**Glebe, NSW**  
503/22 Scotsman Street

**2** BED   **2** BATH   **1** CAR



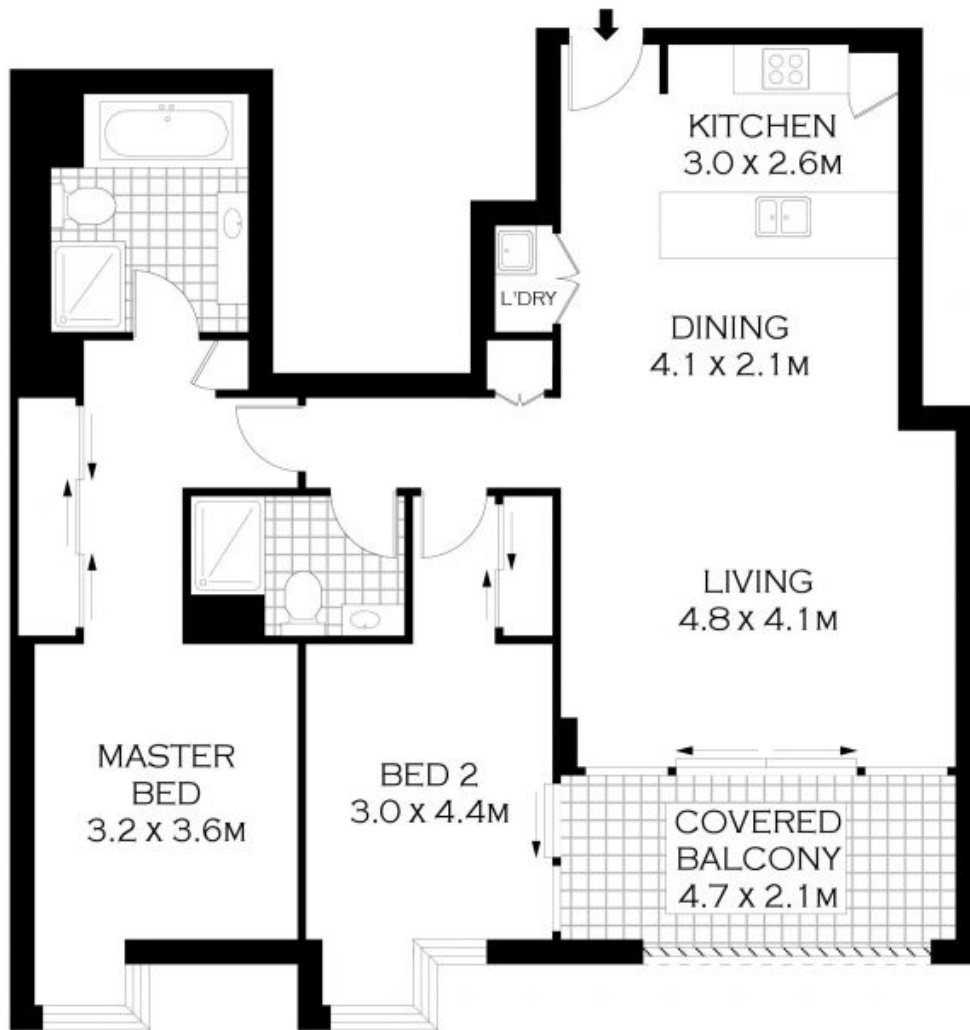
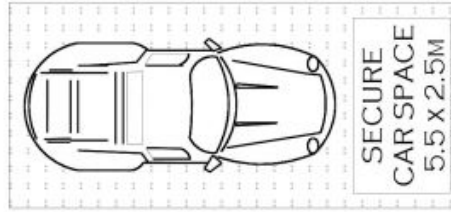
**Northeast-facing apartment with space, style and convenience**

Basking in the natural light and warmth of its prized northeast aspect, this apartment is sleek, stylish and positioned for a cosmopolitan lifestyle. It has been designed with an emphasis on open plan in/outdoor entertaining and is appointed with luxe finishes and inclusions. Step out to parks and walking tracks and stroll to the charming Tramsheds and vibrant Glebe attractions.

- ? Loggia-style alfresco entertaining terrace, northeast aspect
- ? Open plan kitchen and wonderfully roomy living/dining area
- ? Stone bench tops, gas cooking, stainless steel appliances
- ? Generous bedrooms with built-in robes, one with an ensuite
- ? Stylish fully tiled bathrooms, one with a desirable bathtub

**contact agent**

**Council Rates:** \$286/qtr (approx)  
**Strata Rates:** \$1,326/qtr (approx)  
**Contact:** Emily Seymour  
 02 8588 8888  
 0497 333 559  
 William Kwok  
 0285888888  
 0481 702 370  
**Type:** Apartment  
**Sold Date:** 12/04/2022  
**Land:** 99Square Metres  
<https://www.resbymirvac.com>



LEVEL FIVE



PLANS SHOWN ONLY INDICATIVE OF LAYOUT. DIMENSIONS ARE APPROXIMATE.  
Floor plans by [www.remaustralia.com](http://www.remaustralia.com)  
Ref. No: 15013



Plans shown are only indicative of layout. Dimensions are approximate.

503/22 SCOTSMAN STREET

FOREST LODGE

**Glebe, NSW**  
503/22 Scotsman Street