



**Glebe, NSW**  
517/1A The Crescent

**2** BED **2** BATH **1** CAR



**Oversized 2-Bedroom Apartment in Harold Park offering Large Balcony with District Views**

This 129sqm, level 5 apartment offers;

- Large bedrooms with built-in wardrobes, master with walk-in robe
- Modern bathrooms, with bath in ensuite
- Stone kitchen bench tops with integrated Miele appliances
- Spacious living area with direct access to balcony
- North-West facing entertainer's balcony with gas & water points
- Ducted A/C, video intercom and NBN connectivity
- Internal laundry with washer and dryer included
- Car space and storage cage included
- North-west orientation overlooking The Crescent and parklands
- 450m to buses, the light rail and the Tramsheds

**\$900 per week - Top Floor!**

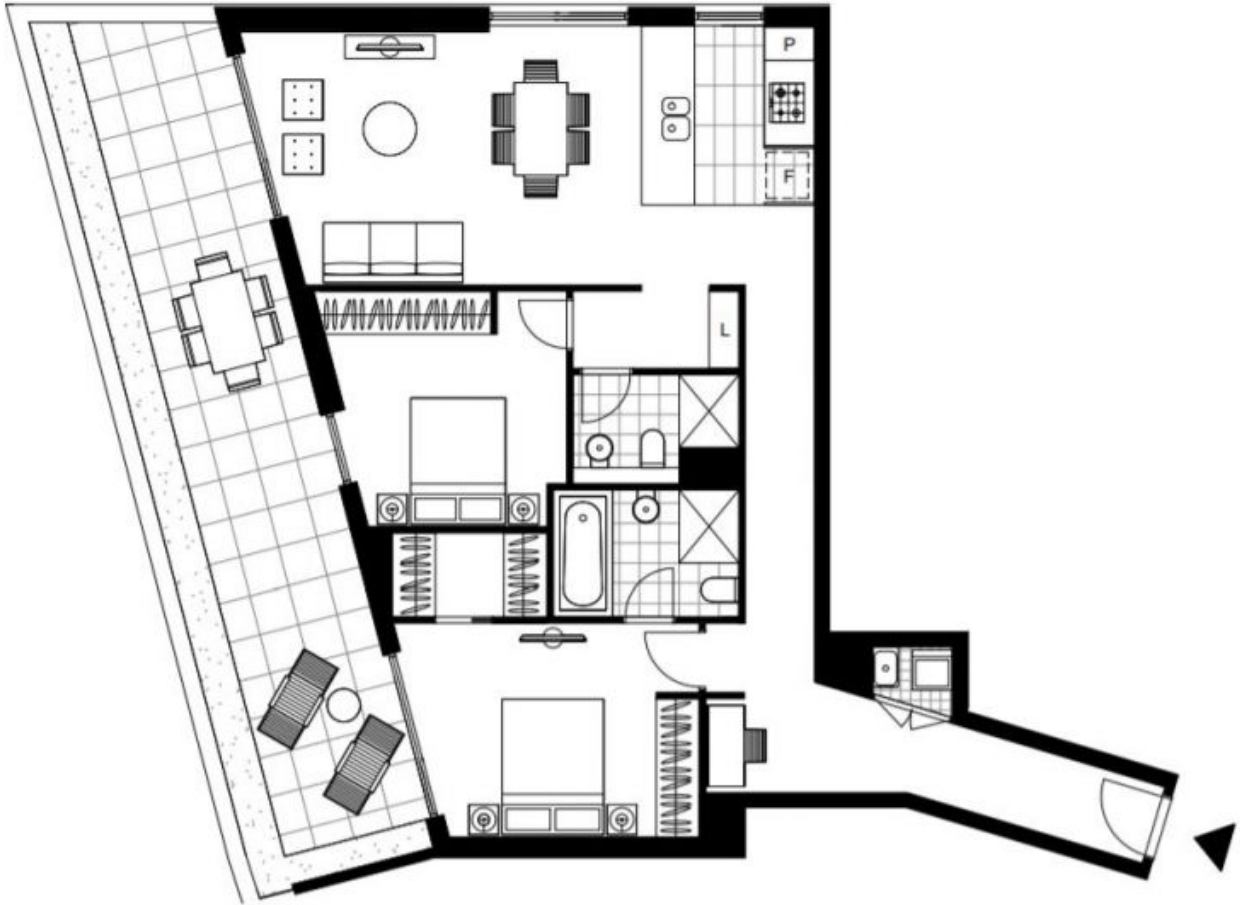
**Contact:** Naz Sabzpouri  
02 8588 8888  
0401 545 440

**Type:** Apartment

**Date Available:** 21/02/2022

**Bond:** \$3720

<https://www.resbymirvac.com>



Plans shown are only indicative of layout. Dimensions are approximate.

**Glebe, NSW**  
517/1A The Crescent