



Glebe, NSW

508/147 Ross Street

1
BED

1
BATH



1-Bedroom Apartment in Harold Park with Park Views

This spacious 1-Bedroom Apartment features;

- A large bedroom with generous built-in wardrobe
- Tiled living and dining area, leading to the balcony
- Modern kitchen with stone benchtop and Miele appliances
- Ultramodern bathrooms with plenty of storage
- Sunny balcony, overlooking the park
- Internal laundry with washer and dryer included
- Secure storage cage included
- Ducted A/C, video intercom and NBN connectivity
- 400m to the Heritage-listed Tramsheds, light rail station and public transport

\$550 per week - Park Facing

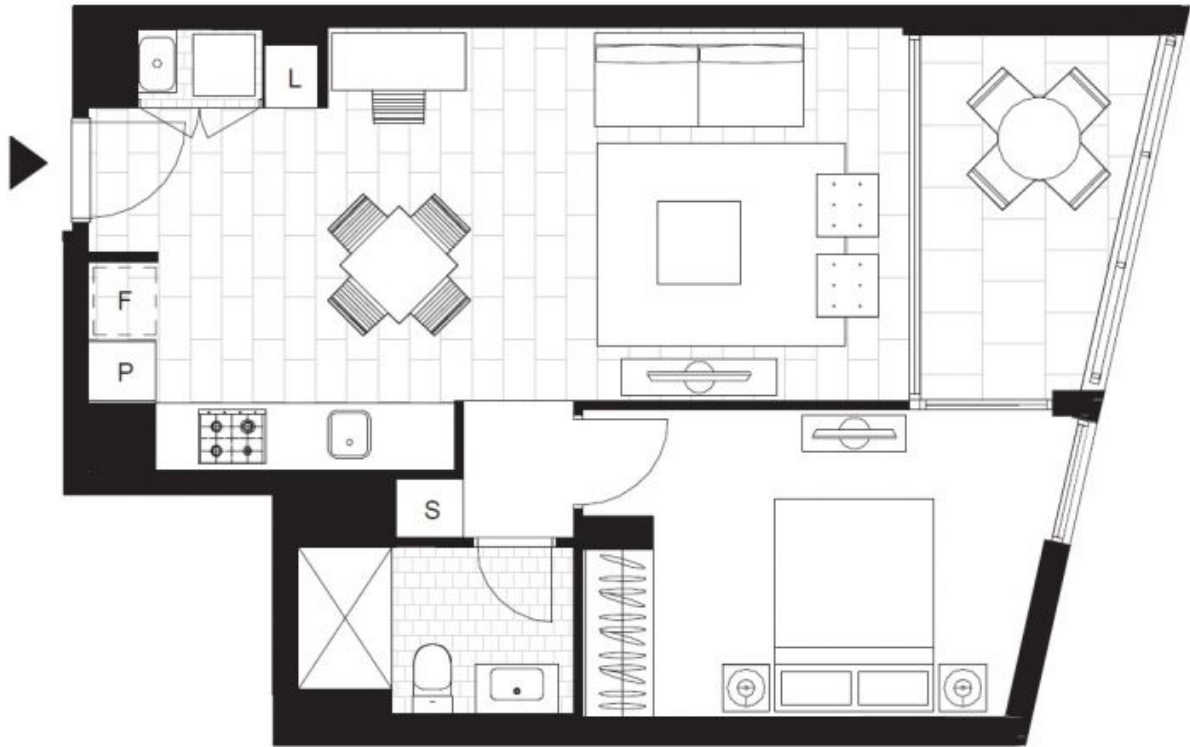
Contact: Naz Sabzpouri
02 8588 8888
0401 545 440

Type: Apartment

Date Available: 16/02/2020

Bond: \$2200

<https://www.resbymirvac.com>



Plans shown are only indicative of layout. Dimensions are approximate.

Glebe, NSW
508/147 Ross Street