



**Glebe, NSW**  
5803/148 Ross Street

**2** **2** **1** **RES**  
BED BATH CAR

### North-East Facing 2 Bedroom with Parking Apartment in Glebe

This 8th floor, 2 bedroom apartment features:

- Well-appointed bedrooms with built-in wardrobes
- Open-plan living and dining area, flowing onto North-East facing balcony
- Modern kitchen with stone benchtop and built-in Miele appliances
- Stylish bathrooms with plenty of generous storage
- Internal laundry with a dryer included
- Secure car space and storage cage included
- Ducted A/C, video intercom and NBN connectivity
- 450m to the Heritage-listed retail precinct Tramsheds, walking distance to public transport

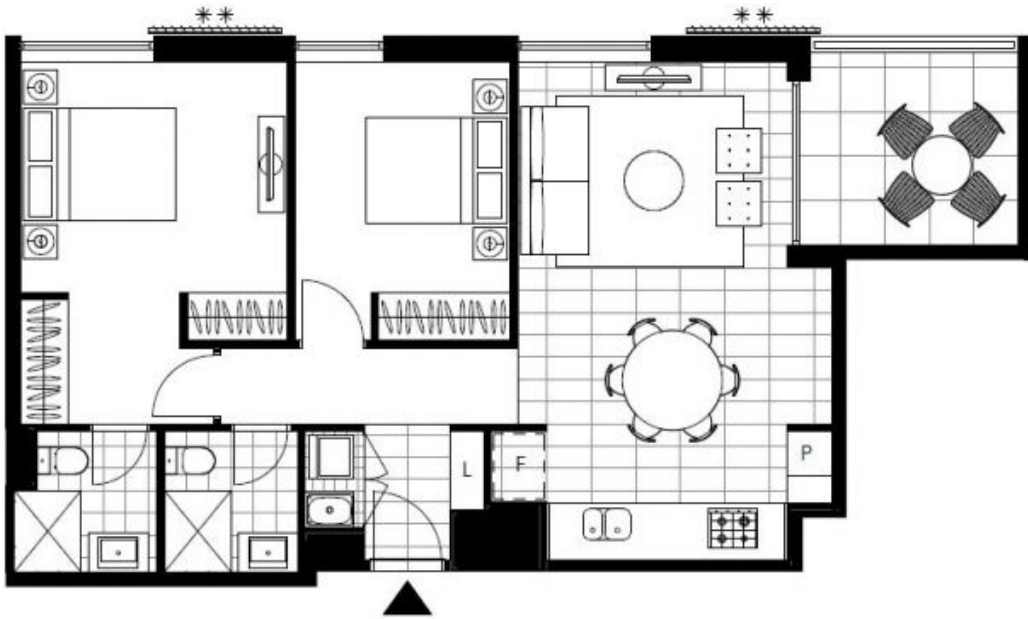
**\$800 per week**

**Contact:** Naz Sabzpouri  
02 8588 8888  
0401 545 440

**Type:** Apartment

**Date Available:** 04/02/2022

**<https://www.resbymirvac.com>**



Plans shown are only indicative of layout. Dimensions are approximate.

**Glebe, NSW**  
5803/148 Ross Street