

Glebe, NSW

409/147 Ross Street

1
BED

1
BATH



Stunning 1 Bedroom Apartment in 'Chevalier' Harold Park

This 60sqm, 4th floor apartment features:

- Well-appointed bedroom with floor-to-ceiling built-in wardrobe
- Tiled open-plan living and dining area, flowing onto balcony
- Sleek kitchen with stone benchtops and built-in Miele appliances
- Contemporary bathroom with plenty of vanity storage
- Internal laundry with washing machine and dryer included
- Study nook at entry, perfect for a home office
- Ducted A/C, video intercom and NBN connectivity
- 450m to the Heritage-listed retail precinct Tramsheds, walking distance to public transport

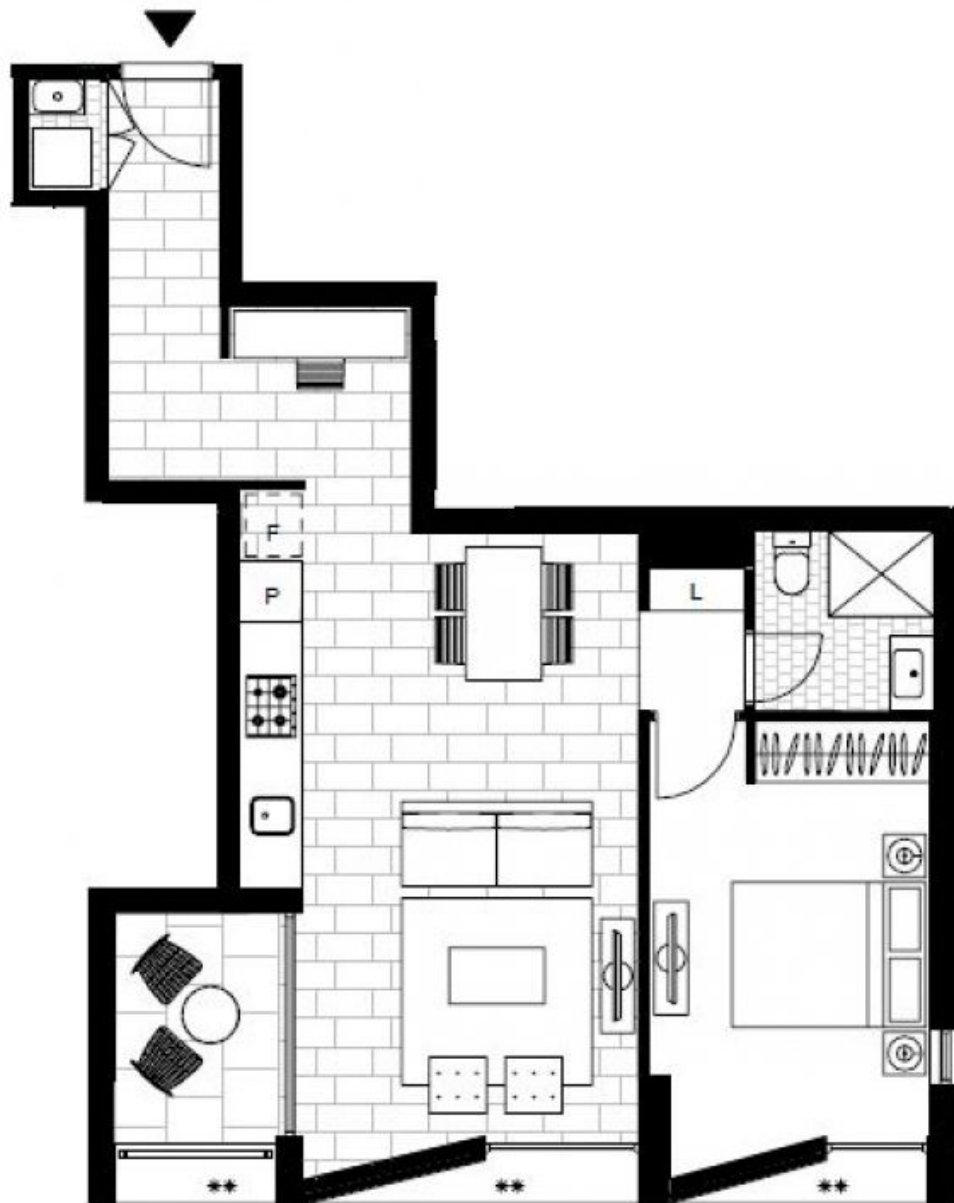
\$540 per week

Contact: Naz Sabzpouri
02 8588 8888
0401 545 440

Type: Apartment

Date Available: 10/02/2022

<https://www.resbymirvac.com>



Plans shown are only indicative of layout. Dimensions are approximate.

Glebe, NSW
409/147 Ross Street